

Flanged sheet stainless steel housing for light loads

Flange with 2 mounting holes

BPFLSS

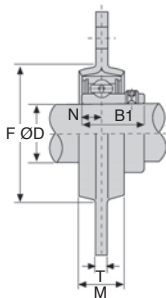
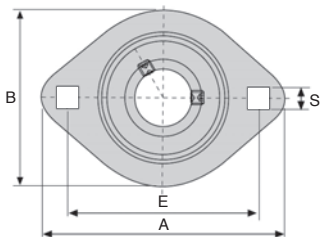
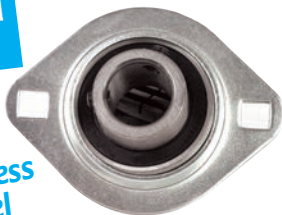
- Palier tôle emboutie
- Matière :
inox

Application

- Mounting a simple bearing, suitable for light loads only

NEW:
stainless steel
range

stainless
steel



DISCOUNTS

Qty	1+	6+	20+	40+	60+
Disc.	List	-10%	-15%	-20%	On request

Part number	ØD	A	E	B	M	S	T	F	Bolt size	B1	N	Weight (kg)	Stock*	Price each 1 to 5
BPFL204/SS	20	90	71	67	16	8,7	2	55,5	M8	25	7	0,22	✓	18,48 €
BPFL205/SS	25	95	76	71	18	8,7	2	60,5	M8	27	7,5	0,27	✓	21,67 €
BPFL206/SS	30	113	90,5	84	18	10,3	2,6	71,5	M10	30	8	0,41	✓	32,11 €
BPFL207/SS	35	122	100	94	20	10,5	2,6	81,0	M10	32	8,5	0,55	-	55,06 €

Dimensions in mm

Fax 0 825 88 6000
Service 0,15 € / min
+ prix appel

cial2@hpceurope.com

HPC SUPPLEMENT 2019

101

Our other products



ECF
Well nut, Chloroprene
elastomer



GPLso
Brush, silk



AXTR
Axle for tensioner
pulley, Shaft



ACLBMC
Detector support for
aluminium profile,
Sensor holder



TBEBASE
Base plate for
economic mini-table,
Allows X-Y cross
tables



BAC105
Storage bin, 8mm



ZHBRA
Plastic bevel gear,
1,25:1 2:1 3:1



S4
Chain sprocket-
stainless steel, 4mm



MRAeco
Low cost quick link,
Steel



SUPccss
Self-centering
clamping hub



MSP3815
Masterplate®
glueable insert



CHAR5050_Z
Spring hinge, screwed

Complementary products

threaded...



BPPss
Pressed stainless
steel pillow block,
Stainless steel



BPFss
Pressed stainless
steel flange bearing,
Stainless steel



BPFL
Sheet steel flanged
bearing for light
loads, Sheet steel



UCFL_SS
Stainless steel flanged
bearing, Stainless
steel