

Flanged sheet stainless steel housing for light loads

Flange with 2 mounting holes

BPFLSS

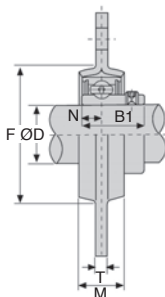
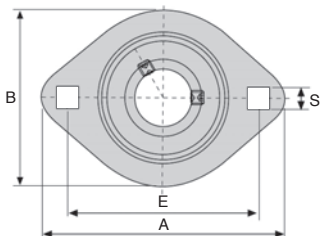
- Palier tôle emboutie
- Matière :
inox

Application

- Mounting a simple bearing, suitable for light loads only

NEW:
stainless steel
range

stainless
steel



DISCOUNTS

Qty	1+	6+	20+	40+	60+
Disc.	List	-10%	-15%	-20%	On request

Part number	ØD	A	E	B	M	S	T	F	Bolt size	B1	N	Weight (kg)	Stock*	Price each 1 to 5
BPFL204/SS	20	90	71	67	16	8,7	2	55,5	M8	25	7	0,22	✓	18,48 €
BPFL205/SS	25	95	76	71	18	8,7	2	60,5	M8	27	7,5	0,27	✓	21,67 €
BPFL206/SS	30	113	90,5	84	18	10,3	2,6	71,5	M10	30	8	0,41	✓	32,11 €
BPFL207/SS	35	122	100	94	20	10,5	2,6	81,0	M10	32	8,5	0,55	-	55,06 €

Dimensions in mm

0 825 88 6000
Service 0,15 € / min
+ prix appel

Our other products



DCA

Suction cup, 1.5 bellows, natural rubber



BIMSS

Indexing plunger mini, miniature - Stainless steel



WW16

Drylin® W slide, slide assembly



BAG-MI

Split shaft collar with clamp lever, Steel



DOG258

Motor-gearbox 12V and 24V DC, from 12 to 15 Nm



BABV

Ball lock pins lockable, Stainless steel



BDMII

Magnetic bush for pin, Fast and light magnetic locking



CHTRP

Single and dual output gearboxes, Up to 9,1 Nm



PW_PWG05

Wheel - precision range, Bronze



PAMF120

Articulated fixable foot, pressed bolt-down base Ø 120, Ø 120



CHM90

Worm and wheel gear reducer, up to 540 Nm



BOX-TOR-MAX

Box set of Nitrile O-rings in nitrile, 2.90 x 1.78mm to 82.14 x 3.53

Complementary products



BPPss

Pressed stainless steel pillow block, Stainless steel



BPFss

Pressed stainless steel flange bearing, Stainless steel



BPFL

Sheet steel flanged bearing for light loads, Sheet steel



UCFL_SS

Stainless steel flanged bearing, Stainless steel