



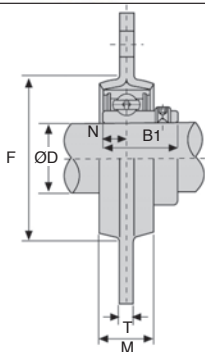
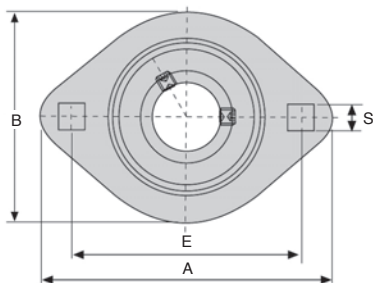
BPFL

2 mounting points

- Pressed sheet steel
- Material : steel

Uses

- Simple mounted bearing for light loads



Load (kN)

Part number	Dynamic C	Static Co
BPFL201	9,2	4,48
BPFL202	9,2	4,48
BPFL203	9,2	4,48
BPFL204	12,2	6,30
BPFL205	13,3	7,46
BPFL206	18,5	10,80
BPFL207	24,5	14,60

DISCOUNTS

Qty	1+	6+	20+	40+	60+
Disc.	List	-10%	-15%	-20%	On request

Part number	ØD	A	E	B	M	S	T	F (min)	Bolt size	B1	N	Weight (kg)	Stock*	Price each 1 to 5
BPFL201	12	81	63,5	59	14	7,1	4,0	49	M6	22	6,0	0,19	✓	9,11 €
BPFL202	15	81	63,5	59	14	7,1	4,0	49	M6	22	6,0	0,19	✓	9,15 €
BPFL203	17	81	63,5	59	14	7,1	4,0	49	M6	22	6,0	0,19	✓	9,50 €
BPFL204	20	90	71,5	67	16	9,0	4,0	56	M8	25	7,0	0,24	✓	9,99 €
BPFL205	25	95	76,0	71	18	9,0	4,0	60	M8	27	7,5	0,28	✓	11,19 €
BPFL206	30	113	90,5	84	18	11,0	5,2	71	M10	30	8,0	0,38	✓	14,76 €
BPFL207	35	122	100,0	94	20	11,0	5,2	81	M10	32	8,5	0,50	✓	17,38 €

*Depending on availability - Dimensions in mm

Our other products



ACLEPP

Right angled bracket for aluminium profile, 4 holes



DOMI30

Connecting kits, XY linking kit



GLT3-46A

Telescopic drawer with damper,



PX

Optional output shaft stainless steel, P gearboxes single sided outp...



NCT

Square tube connector, Fixed angle



PTR

Idler chain sprocket, For standard applications



SLB

Indexing plunger, steel class 5.8



RURp

Swivel castor with double brake, Polyurethane - Aluminium rim (Free



DCG

Suction cup, 2.5 bellows, silicon



LOQ

Manual lock, Manual latch



MDB_MTB

Moulded plastic bevel gear (nylon), 2:1



CCL

Standard wire thimble, Steel

Complementary products



BPF

Sheet steel flanged bearing for light loads, Sheet steel



BPP

Pressed steel flanged bearing for light loads, Sheet steel



BPFLss

Pressed stainless steel flange bearing, Stainless steel