



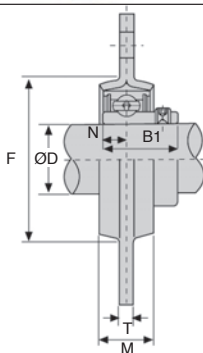
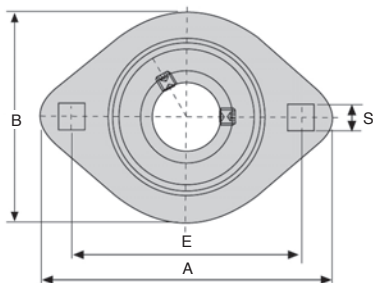
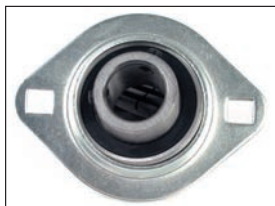
BPFL

2 mounting points

- Pressed sheet steel
- Material : steel

Uses

- Simple mounted bearing for light loads



Load (kN)

Part number	Dynamic C	Static Co
BPFL201	9,2	4,48
BPFL202	9,2	4,48
BPFL203	9,2	4,48
BPFL204	12,2	6,30
BPFL205	13,3	7,46
BPFL206	18,5	10,80
BPFL207	24,5	14,60

DISCOUNTS

Qty	1+	6+	20+	40+	60+
Disc.	List	-10%	-15%	-20%	On request

Part number	ØD	A	E	B	M	S	T	F (min)	Bolt size	B1	N	Weight (kg)	Stock*	Price each 1 to 5
BPFL201	12	81	63,5	59	14	7,1	4,0	49	M6	22	6,0	0,19	✓	9,11 €
BPFL202	15	81	63,5	59	14	7,1	4,0	49	M6	22	6,0	0,19	✓	9,15 €
BPFL203	17	81	63,5	59	14	7,1	4,0	49	M6	22	6,0	0,19	✓	9,50 €
BPFL204	20	90	71,5	67	16	9,0	4,0	56	M8	25	7,0	0,24	✓	9,99 €
BPFL205	25	95	76,0	71	18	9,0	4,0	60	M8	27	7,5	0,28	✓	11,19 €
BPFL206	30	113	90,5	84	18	11,0	5,2	71	M10	30	8,0	0,38	✓	14,76 €
BPFL207	35	122	100,0	94	20	11,0	5,2	81	M10	32	8,5	0,50	✓	17,38 €

*Depending on availability - Dimensions in mm

Our other products



HTD3M_09
HTD Heavy duty timing pulley, HTD3 Aluminium



GP
Spring loaded toggle latch, Standard (GP22-GP23)



CHM30
Worm and wheel gear reducer, up to 28 Nm



UCFL_PBT
Stainless steel/Polymer flanged bearing, Polymer and stainless steel



SF_ZZ
Deep groove ball bearing, Stainless steel



BIM
Indexing plunger mini, miniature



PRF_ECL
Nut for aluminium profile, Steel square nut with tab



CABma
Swaging sleeve for fitting cable, To crimp a wire rope



SVR5
Screwjack with travelling nut, with



CHM90
Worm and wheel gear reducer, up to 540



NK40
Drylin®N miniature guiding system, Withd



BLH30
Right angled gearbox, from 1.32 to 4.40 Nm

Complementary products



BPF
Sheet steel flanged bearing for light loads, Sheet steel



BPP
Pressed steel flanged bearing for light loads, Sheet steel



BPFLss
Pressed stainless steel flange bearing, Stainless steel