

Sheet steel flanged bearing for light loads



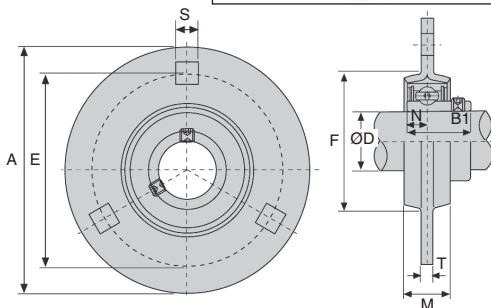
BPF

3 mounting points

- Pressed sheet steel
- Material : steel

Use

- Mounting single bearing (light loads only)



Part number	Load (kN)	
	Dynamic C	Static Co
BPF201	9,2	4,48
BPF202	9,2	4,48
BPF203	9,2	4,48
BPF204	12,2	6,30
BPF205	13,3	7,46
BPF206	18,5	10,80
BPF207	24,5	14,60

DISCOUNTS

Qty	1+	6+	20+	40+	60+
Disc.	List	-10%	-15%	-20%	On request

Part number	ØD	A	E	M	S	T	F (min)	Bolt size	B1	N	Weight (kg)	Stock*	Price each 1 to 5
BPF201	12	81	63,5	14	7,1	4,0	49	M6	22	6,0	0,27	✓	10,33 €
BPF202	15	81	63,5	14	7,1	4,0	49	M6	22	6,0	0,27	✓	10,41 €
BPF203	17	81	63,5	14	7,1	4,0	49	M6	22	6,0	0,27	-	10,79 €
BPF204	20	90	71,5	16	9,0	4,0	56	M8	25	7,0	0,33	✓	12,76 €
BPF205	25	95	76,0	18	9,0	4,0	60	M8	27	7,5	0,38	✓	13,44 €
BPF206	30	113	90,5	18	11,0	5,2	71	M10	30	8,0	0,62	-	19,74 €
BPF207	35	122	100,0	20	11,0	5,2	81	M10	32	8,5	0,82	✓	22,70 €

*Depending on availability - Dimensions in mm

HPC

WEB
04/2021

www.hpceurope.com

Tél: 0 825 88 5000 Service 0,15€/min + prix appel

Our other products



HTD5M_25

HTD Heavy duty timing pulley, HTD5 Aluminium



MBF

Threaded blocking clamp, Threaded locking clamp



PITA

Locking bolt, with T handle



PSG08

Spur gear - precision range, Pre-hardened Steel 35NCD6



T10-BAR

T type tooth bar stock, T10



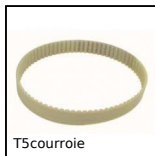
RT25ss

Self-centering flanged locking assembly, Medium/high torque



GE_ES_2RS

Spherical bushing, Steel / steel with seals



T5courroie

T type timing belt, T5 Steel cored polyurethane



BPHF

Ball transfer unit push fit, Heavy



CHA35

Hinge for aluminium profile, Hinge



PCLA_T

Technopolymer clamping lever - male, Plastic



BLHB60

Right angled gearbox, bored shafts, up to 70 Nm

Complementary products



BPP

Pressed steel flanged bearing for light loads, Sheet steel



BPFL

Sheet steel flanged bearing for light loads, Sheet steel



BPFss

Pressed stainless steel flange bearing, Stainless steel