



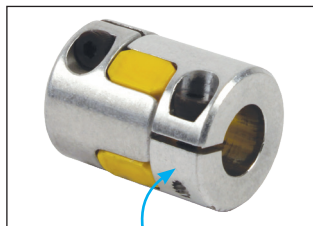
BKGS BKGS2

Coupling for driven systems Torque range: 1.2 to 450 Nm

- Elastic backlash free coupling
- Reliable torque transmission
- Maintenance free
- Low inertia/size
- Easy to assemble, even in confined spaces
- Reduces vibration
- Materials:

Hub: Aluminium

Ring: Polyurethane 98 Shore A (Red)
except sizes 7 and 9 which are Shore
92 A (Yellow)



*With 1 or 2 tightening
screw depending on the size*

Applications

- Metrology, control systems, driving,
machine tools, driving lead screws

Torque (Nm) transmissible by friction for a split hub

Bore size	Ø3	Ø4	Ø5	Ø6	Ø8	Ø10	Ø12	Ø14	Ø15	Ø18	Ø20	Ø25	Ø26	Ø28	Ø30	Ø35	Ø40	Ø45	Ø50	Ø55	Ø56
BKGS-7	0,7	0,9	1,1	1,2																	
BKGS-9	1,7	2,1	2,4	3,0	3,0																
BKGS2-12	3,5	4,3	5,1	6,8	8,4	9															
BKGS2-14	8,4	10,2	12,5	12,5	12,5	12,5															
BKGS2-19					17	17	17	17	17	17	17										
BKGS2-24					35	42	48	52	60	60	60	60	60	60							
BKGS2-28							96	102	121	133	160	160	160	160	160						
BKGS2-38							143	172	191	238	248	267	286	325	325	325					
BKGS2-42										221	277	288	310	332	387	443	450	450	450	450	

Part number	Transmissible torque (Nm)	Max. speed (t/min)	Moment of inertia (10 ⁻⁶ kg.m ²)	Misalignment			Tightening torque (Nm)
				axial (mm)	radial (mm)	angular	
BKGS-7	1,2	27000	0,0001	-0,3/+0,6	0,10	1°	0,35
BKGS-9	3	19000	0,0002	-0,4/+0,8	0,13	1°	0,75
BKGS2-12	9	15000	0,00296	+0,9/-0,4	0,08	0,9°	2,1
BKGS2-14	12,5	13000	0,006	-0,5/+1,0	0,09	0,9°	5
BKGS2-19	17	10000	0,029	-0,5/+1,2	0,06	0,9°	10
BKGS2-24	60	7000	0,121	-0,5/+1,4	0,10	0,9°	18
BKGS2-28	160	6000	0,236	-0,7/+1,5	0,11	0,9°	43
BKGS2-38	325	5000	0,797	-0,7/+1,8	0,12	0,9°	84
BKGS2-42	450	4000	1,779	-1,0/+2,0	0,14	0,9°	84

Dimensions in mm

Characteristics

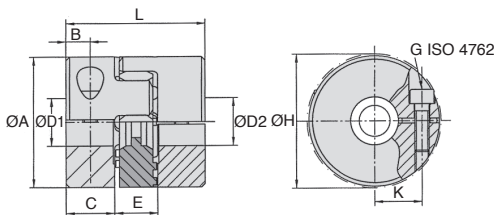
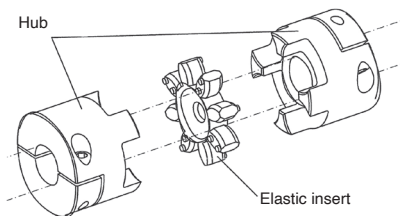
- Hardwearing
- Clamping hub
BKGS: clamp with 1 tightening screw
BKGS2: clamp with 2 tightening screws
- Coupling mounted under pre-tension
- Shafts must have g6 or h7 tolerance
- Degrease surfaces before assembly

Bore

- Choose $\text{\O}D1$ and $\text{\O}D2$ from within the range shown

Option

- Keyway according to DIN6885-1



DISCOUNTS

Qty	1+	2+	4+
Disc.	List	-6%	On request

Part number	L	$\text{\O}D1/\text{\O}D2$		With keyway			Without keyway			K	$\text{\O}M$	Price each	
		$\text{\O}D1$	$\text{\O}H$	C1	H3	N	keyway	keyway	Without keyway			With keyway	
BKGS-7	20	14	17	3-7	6-7	6	8	3	5	1xM2			
BKGS-9	26	19,5	23	4-11	6-11	8	10	4	7,5	1xM2,5			
BKGS2-12	34	24,5	26	4-12	6-12	11	12	5	8,1	2xM3	On request	On request	
BKGS2-14	32	29,5	33	5-15	6-15	9,5	13	5	10,5	2xM4			
BKGS2-19	50	39,5	45	8-20	8-20	17	16	8	14	2xM6			
BKGS2-24	58	54,5	57	10-32	10-32	18	18	7	20	2xM6			
BKGS2-28	62	64,5	68	14-35	14-35	21	20	9	23,8	2xM8			
BKGS2-38	85	79,5	86	15-45	15-45	26,5	23	13	29,5	2xM10			
BKGS2-42	102	94,5	95	20-56	20-56	38	26	13,5	35	2xM10			

Dimensions in mm

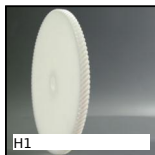
Our other products



GAL48_OMNI
Omni-directional roller, Omni-directional



PSG08S
Spur gear - precision range, Stainless steel 303



H1
Crossed helical gear
crossed axis at 90°,
Machined plastic
(delrin)



CHM63
Worm and wheel gear
reducer, up to 196
Nm



DOMI50
Accessories, Turntable



E40
Right angle helical
reducers, from 2.30 to
20 Nm



F7-P-AM
Multifunction display,
Magnetic ring



SHW
Plain washer, A2
Stainless steel



SCH
Horizontal hook
toggle clamp,
Horizontal Hook
clamp - stainless steel



CLM
Male clevis end,
Stainless steel short



RJUM01
Closed polymer
Drylin® R bearing,
Drylin® R



BSM_LOK
Long-Lok spring
plunger with internal
hexagonal socket,
LONG-LOK - s...

Complementary products



DKGS
Backlash free
coupling Gerwah®,
from 0.5 to 3Nm



ADSR
Backlash free
coupling Gerwah®,
from 12.5 to 525Nm