

Stainless steel miniature indexing button

BIM/ss

For reduced spaces

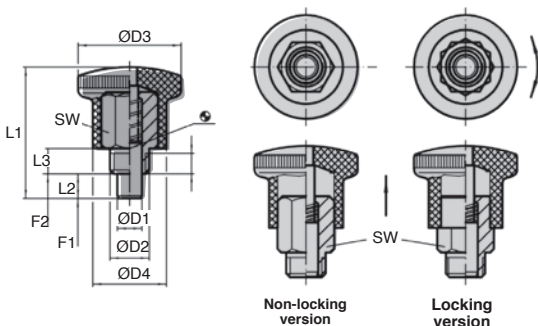
- Particularly suitable for screwing into thin-walled parts.
- Works well in reduced spaces
- Non-removable button
- Materials:
 - Head - 304 stainless steel
 - Body - 304 stainless steel
 - Pin - 303 stainless steel

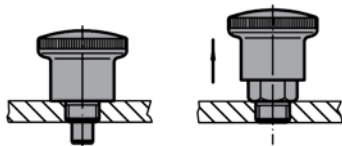
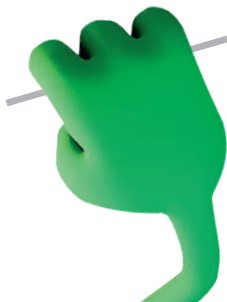
Assembly

- Screw in as far as possible, then pull on the button to reveal the hexagonal nut for final assembly.

Operation

- For the locking version, the button is pulled and then turned 90°C where it is retained in a notch.
- Max working temperature 250°C.





DISCOUNTS

| | | | |
|------|------|------|------------|
| Qty | 1+ | 6+ | 20+ |
| Disc | List | -10% | On request |

| Part number | ØD1 | ØD2 | L1 | ØD3 | Ød4 | L2 | L3 | SW | F1 (N) | F2 (N) | Weight (g) | Price each 1 to 5 |
|----------------------------|-----|---------|------|------|-----|----|----|----|-----------|-----------|---------------|----------------------|
| Non-locking version | | | | | | | | | | | | |
| BIM4-8-27.5/SS | 4 | M8 | 27,5 | 21,0 | 15 | 5 | 6 | 10 | 4 | 12 | 28 | 19,92 € |
| BIM4-8F-27.5/SS | 4 | M8x1 | 27,5 | 21,0 | 15 | 5 | 6 | 10 | 4 | 12 | 28 | 19,92 € |
| BIM5-10-34/SS | 5 | M10 | 34 | 25,0 | 18 | 6 | 8 | 12 | 6 | 16 | 49 | 22,27 € |
| BIM5-10F-34/SS | 5 | M10x1 | 34 | 25,0 | 18 | 6 | 8 | 12 | 6 | 16 | 50 | 22,27 € |
| BIM6-10-34/SS | 6 | M10 | 34 | 25,0 | 18 | 6 | 8 | 12 | 6 | 16 | 50 | 22,27 € |
| BIM6-10F-34/SS | 6 | M10x1 | 34 | 25,0 | 18 | 6 | 8 | 12 | 6 | 16 | 50 | 22,27 € |
| BIM6-12-40.5/SS | 6 | M12 | 40,5 | 28,0 | 20 | 7 | 10 | 14 | 10 | 23 | 74 | 27,19 € |
| BIM6-12F-40.5/SS | 6 | M12x1,5 | 40,5 | 28,0 | 20 | 7 | 10 | 14 | 10 | 23 | 75 | 27,19 € |
| BIM7-12-40.5/SS | 7 | M12 | 40,5 | 28,0 | 20 | 7 | 10 | 14 | 10 | 23 | 75 | 26,74 € |
| BIM7-12F-40.5/SS | 7 | M12x1,5 | 40,5 | 28,0 | 20 | 7 | 10 | 14 | 10 | 23 | 75 | 26,74 € |
| BIM8-16-47.5/SS | 8 | M16 | 47,5 | 33,0 | 23 | 10 | 12 | 17 | 11 | 34 | 110 | 33,57 € |
| BIM8-16F-47.5/SS | 8 | M16x1,5 | 47,5 | 33,0 | 23 | 10 | 12 | 17 | 11 | 35 | 113 | 33,57 € |
| BIM10-16-47.5/SS | 10 | M16 | 47,5 | 33,0 | 23 | 10 | 12 | 17 | 11 | 35 | 113 | 33,57 € |
| BIM10-16F-47.5/SS | 10 | M16x1,5 | 47,5 | 33,0 | 23 | 10 | 12 | 17 | 11 | 35 | 113 | 33,57 € |
| Locking version | | | | | | | | | | | | |
| BIM4-8-27.5/LOK/SS | 4 | M8 | 27,5 | 21,0 | 15 | 5 | 6 | 10 | 4 | 12 | 27 | 19,92 € |
| BIM4-8F-27.5/LOK/SS | 4 | M8x1 | 27,5 | 21,0 | 15 | 5 | 6 | 10 | 4 | 12 | 28 | 19,92 € |
| BIM5-10-34/LOK/SS | 5 | M10 | 34 | 25,0 | 18 | 6 | 8 | 12 | 6 | 16 | 48 | 22,27 € |
| BIM5-10F-34/LOK/SS | 5 | M10x1 | 34 | 25,0 | 18 | 6 | 8 | 12 | 6 | 16 | 49 | 22,27 € |
| BIM6-10-34/LOK/SS | 6 | M10 | 34 | 25,0 | 18 | 6 | 8 | 12 | 6 | 16 | 49 | 22,40 € |
| BIM6-10F-34/LOK/SS | 6 | M10x1 | 34 | 25,0 | 18 | 6 | 8 | 12 | 6 | 16 | 49 | 22,40 € |
| BIM6-12-40.5/LOK/SS | 6 | M12 | 40,5 | 28,0 | 20 | 7 | 10 | 14 | 10 | 23 | 72 | 27,19 € |
| BIM6-12F-40.5/LOK/SS | 6 | M12x1,5 | 40,5 | 28,0 | 20 | 7 | 10 | 14 | 10 | 23 | 73 | 27,19 € |
| BIM7-12-40.5/LOK/SS | 7 | M12 | 40,5 | 28,0 | 20 | 7 | 10 | 14 | 10 | 23 | 73 | 26,74 € |
| BIM7-12F-40.5/LOK/SS | 7 | M12x1,5 | 40,5 | 28,0 | 20 | 7 | 10 | 14 | 10 | 23 | 74 | 26,74 € |
| BIM8-16-47.5/LOK/SS | 8 | M16 | 47,5 | 33,0 | 23 | 10 | 12 | 17 | 11 | 35 | 110 | 33,57 € |
| BIM8-16F-47.5/LOK/SS | 8 | M16x1,5 | 47,5 | 33,0 | 23 | 10 | 12 | 17 | 11 | 35 | 110 | 33,57 € |
| BIM10-16-47.5/LOK/SS | 10 | M16 | 47,5 | 33,0 | 23 | 10 | 12 | 17 | 11 | 35 | 112 | 33,57 € |
| BIM10-16F-47.5/LOK/SS | 10 | M16x1,5 | 47,5 | 33,0 | 23 | 10 | 12 | 17 | 11 | 35 | 114 | 33,57 € |

All dimensions in mm

0 825 88 6000

Service 0,15 € / min
+ prix appel

Fax

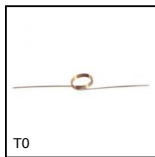
cial2@hpceurope.com

HPC

SUPPLEMENT 2019

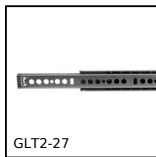
67

Our other products



T0

Torsion spring,
Stainless steel



GLT2-27

Telescopic drawer
runners for groove
mounting, Partial
extension



CHC

Socket headed screw,
Steel class 12.19



AT5courioie

AT type timing belt,
AT5 Steel cored
polyurethane



OP6

Mechanical digital
position indicator, 5
numbers



PTRSS

Idle chain sprocket,
For hostile
environments



RPCplss

Swivel castor with
double brake,
Stainless steel -
Polyamide



PLM-20SC

Cylindrical magnet,
Cylindrical magnet



TCC

Rigging screw
(hook/hook), Steel



WJUM16

Drylin® W bearing
block, Slide



AT5-16ECO

AT type timing pulley,
Economy range - AT5



HW_HT

Half-rail guide, Rail

Complementary products



BIM

Indexing plunger mini,
miniature



SLBW

Indexing plunger,
weldable, Weldable -
Steel



PPD

Indexing plunger for
sheets, For sheet
metal



PPF

Indexing plunger with
flange, with drilled
flange