

Flanged bronze nut



BFM

2 start, right hand thread

- **Toleranced flange**
- Thread conforms to NFE 03.616
- Machined nut
- Thread tolerance: 7H
- Material: Bronze CuSn8P

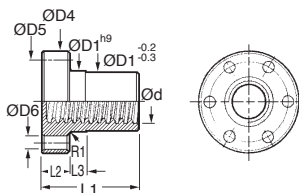
Accessoires

- LFM stainless steel leadscrew



Toleranced flange

2 Start



DISCOUNTS

Qty	1+	10+	20+	40+
Disc.	List	-30%	-40%	On request

Part number	Pitch			ØD1	ØD4	ØD5	ØD6	L1	L2	L3	Price each	
	Ød	P									1 to 9	20 to 39**
BFM126	12	6	28	48	38	6	35	12	8	50,83 €	30,50 €	
BFM168	16	8	28	48	38	6	35	12	8	51,00 €	30,60 €	
BFM188	18	8	28	48	38	6	35	12	8	51,00 €	30,60 €	
BFM208	20	8	32	55	45	7	44	12	8	69,76 €	41,86 €	
BFM2210	22	10	32	55	45	7	44	12	8	82,40 €	49,44 €	
BFM2410	24	10	32	55	45	7	44	12	8	67,98 €	40,79 €	
BFM2810	28	10	38	62	50	7	46	14	8	101,15 €	60,70 €	
BFM3012	30	12	38	62	50	7	46	14	8	90,89 €	54,54 €	
BFM3212	32	12	45	70	58	7	54	16	10	144,72 €	86,83 €	
BFM3612	36	12	45	70	58	7	54	16	10	144,44 €	86,67 €	
BFM4014	40	14	63	95	78	9	66	16	12	228,30 €	136,98 €	

Dimensions in mm

** refer to discounts

Our other products



TBEASE10

Economic mini-table with trapezoidal leadscrew, 1kg



PRFSRAD

Dual lock for aluminium profile, Quick fitting, self locking door du...



CLB_M

Die cast zinc clamping lever - female, Zamak



WSRM

Cylindrical polymer nut, Polymer (Iglidur®) - 1 thread



G4-ECO

Eco range Spur gear, Steel C45



PTGP

Tensioner pulley, For flat belts



MEB

Moulded plastic bevel gear (nylon), 1:1



ASM

Cylindrical polymer bush, Food grade polymer



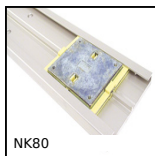
RTTss

Locking assembly, Medium/high torque



TBD

Manual leadscrew table with opposing threads, 40kg



NK80

Drylin®N miniature guiding system, Width 80mm



CLA

Clamping lever Hygienic Usit® - female, Stainless steel

Complementary products



LFM2

Steel leadscrew, Medium carbon steel - 2 threads



LRM2

Cylindrical bronze nut, Bronze - 2 threads



LFM2

Steel leadscrew, Medium carbon steel - 2 threads



LFM2

Steel leadscrew, Medium carbon steel - 2 threads