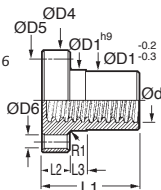


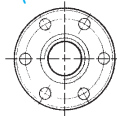
1 start, right or left hand thread

BFM BFMLH

- Right or left-hand thread
- Toleranced flange
- Thread conforms to NFE 03.616
- Machined nut
- Thread tolerance: 7H
- Material: Bronze CuSn8P



Toleranced flange



Accessories

- LFM steel leadscrew or LSM stainless steel leadscrew

DISCOUNTS A

Qty	1+	10+	20+	40+
Disc.	List	-30%	-40%	On request

DISCOUNTS B

Qty	1+	5+	10+
Disc.	List	-5%	On request

Part number	Ød	ØD1	ØD4	ØD5	ØD6	L1	L2	L3	Stock*	Price each	
										1 to 9	20 to 39**
Right-hand thread											
BFM102	10 x 2	25	42	34	5	25	10	6	✓	A 30,87 €	A 18,52 €
BFM123	12 x 3	28	48	38	6	35	12	8	✓	A 44,84 €	A 26,91 €
BFM164	16 x 4	28	48	38	6	35	12	8	✓	A 44,96 €	A 26,91 €
BFM184	18 x 4	28	48	38	6	35	12	8	✓	A 44,96 €	A 26,98 €
BFM204	20 x 4	32	55	45	7	44	12	8	✓	A 66,29 €	A 26,98 €
BFM225	22 x 5	32	55	45	7	44	12	8	✓	A 66,83 €	A 39,78 €
BFM245	24 x 5	32	55	45	7	44	12	8	✓	A 62,46 €	A 37,47 €
BFM285	28 x 5	38	62	50	7	46	14	8	✓	A 85,58 €	A 51,35 €
BFM306	30 x 6	38	62	50	7	46	14	8	✓	A 85,92 €	A 51,55 €
BFM326	32 x 6	45	70	58	7	54	16	10	✓	A 129,73 €	A 77,84 €
BFM366	36 x 6	45	70	58	7	54	16	10	✓	B 69,99 €	B On request
BFM407	40 x 7	63	95	78	9	66	16	12	✓	B 131,38 €	B On request
BFM447	44 x 7	63	95	78	9	66	16	12	-	B 144,10 €	B On request
BFM508	50 x 8	72	110	90	11	75	18	14	✓	B 213,72 €	B On request
BFM609	60 x 9	88	130	110	13	90	20	16	-	B 350,81 €	B On request
BFM7010	70 x 10	95	140	120	13	105	22	17	-	B 497,88 €	B On request
Left-hand thread											
BFM102/LH	10 x 2	25	42	34	5	25	10	6	✓	A 34,99 €	A 20,99 €
BFM123/LH	12 x 3	28	48	38	6	35	12	8	✓	A 50,83 €	A 30,50 €
BFM164/LH	16 x 4	28	48	38	6	35	12	8	✓	A 50,93 €	A 30,50 €
BFM184/LH	18 x 4	28	48	38	6	35	12	8	✓	A 51,00 €	A 30,60 €
BFM204/LH	20 x 4	32	55	45	7	44	12	8	✓	A 69,71 €	A 41,83 €
BFM225/LH	22 x 5	32	55	45	7	44	12	8	✓	A 82,32 €	A 49,39 €
BFM245/LH	24 x 5	32	55	45	7	44	12	8	✓	A 67,98 €	A 40,79 €
BFM285/LH	28 x 5	38	62	50	7	46	14	8	✓	A 101,15 €	A 60,70 €
BFM306/LH	30 x 6	38	62	50	7	46	14	8	✓	A 90,89 €	A 54,50 €
BFM326/LH	32 x 6	45	70	58	7	54	16	10	-	A 144,72 €	A 86,83 €
BFM366/LH	36 x 6	45	70	58	7	54	16	10	✓	B 77,55 €	B On request
BFM407/LH	40 x 7	63	95	78	9	66	16	12	✓	B 134,03 €	B On request
BFM447/LH	44 x 7	63	95	78	9	66	16	12	-	B 150,46 €	B On request
BFM508/LH	50 x 8	72	110	90	11	75	18	14	-	B 230,75 €	B On request
BFM609/LH	60 x 9	88	130	110	13	90	20	16	-	B 380,05 €	B On request
BFM7010/LH	70 x 10	95	140	120	13	105	22	17	-	B 535,00 €	B On request

*Depending on availability - Dimensions in mm

** refer to discounts

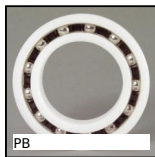
Our other products



SBS_L
Chain link, Stainless steel



PAP
Handle for aluminium profile, Ergonomic handle



PB
Plastic deep groove ball bearing, Plastic balls material : stainle...



V3RA_PT
3-spoked handwheel with handle, Polyamide



BLHT20
Right angled gearbox, from 0.66 to 1.77 Nm



SCE
U-shaped cable clamp, Steel



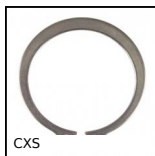
CNA-CNG
Right angled mounting plate, Right angled mounting plate for clevis



PAL
Self locking counter nut, For axial locking



F7-P-AM
Multifunction display, Magnetic ring



CXS
External circlip DIN471, external DIN 471



BLHT30
Right angled gearbox, from 1.65 to 4.40 Nm

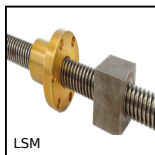


CHAC4040SS
Square hinge with riveted pin, drilled, Square with riveted pin, dri...

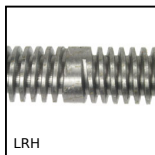
Complementary products



LFM
Steel leadscrew, Medium carbon steel - 1 thread



LSM
Stainless steel 316L leadscrew, Stainless steel - 1 thread



LRH
Bi-directional leadscrew, Bi-directional - 1 thread