



Adjustable support arm

Increased grip

BDP2R

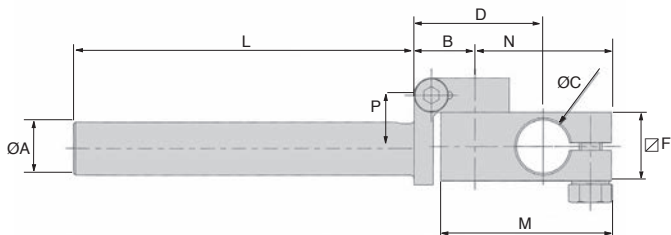
- **Universal adjustable support arm, strengthened**

- Material :

Aluminium with steel screws

Advantages

- Safe in operation through use of optimised jaw support
- Lighter



DISCOUNTS

Qty	1+	10+	30+
Disc.	List	-5%	On request

Part number	ØA	B	ØC	D	L	M	∇F	N	P	Weight (g)	Price each 1 to 9
BDP20-50/2R	20	19	20	43	50	59	24	47	16,5	89	97,18 €
BDP20-100/2R	20	19	20	43	100	59	24	47	16,5	104	103,15 €
BDP20-150/2R	20	19	20	43	150	59	24	47	16,5	119	109,09 €

Dimensions in mm

Our other products



GTC

Belt tensioner, For standard applications



PRF_CHA D

Hinge and joint, Lift-off hinge



GSI_A

Gas control screw for gas spring, Gas control screw



CHA138

Screwed hinge with threaded insert, 138 degrees



BSM

Spring plunger with internal hexagonal socket, steel body, plastic pin



BABreglable

Adjustable ball pin hardened stainless steel, adjustable



PCS37K

Chain sprocket with hardened teeth, 9.525mm (DIN06B-1)



PO

Pull handle - Multi-sector, Tapped recessed insert



CHA1056_U4

Screw-in hinge, Section 40X40



SLV

Vertical toggle clamp, Vertical Lever Clamp - steel



TCL-ECL

Adjusting nut, Fine thread



HTD5M_15

HTD Heavy duty timing pulley, HTD5 Aluminium

Complementary products



BDPR

Holding arm, Rigid



BDP1R

Adjustable support arm, Single clamp