

# Adjustable support arm



## BDP1R

## Single grip

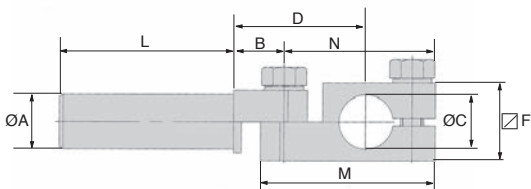
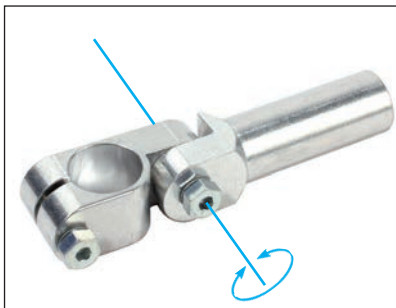
- **Universal rigid support arm , adjustable**

- **Material :**

Aluminium with steel screws

### Advantages

- Securely supports gripping jaws
- Flexible mounting possibilities
- Angle adjustable over full range, blocked in position using M6 screw



### DISCOUNTS

|       |      |     |            |
|-------|------|-----|------------|
| Qty   | 1+   | 10+ | 30+        |
| Disc. | List | -5% | On request |

| Part number  | ØA | B  | ØC | D  | L   | M  | ∇F | N  | Weight | Price each |
|--------------|----|----|----|----|-----|----|----|----|--------|------------|
|              |    |    |    |    |     |    |    |    | (g)    | 1 to 9     |
| BDP20-50/1R  | 20 | 15 | 20 | 36 | 50  | 49 | 25 | 43 | 87     | 55,51 €    |
| BDP20-100/1R | 20 | 15 | 20 | 36 | 100 | 49 | 25 | 43 | 103    | 61,04 €    |
| BDP20-150/1R | 20 | 15 | 20 | 36 | 150 | 49 | 25 | 43 | 120    | 61,59 €    |

Dimensions in mm

## Our other products



BAC105

Storage bin, 8mm



PRF\_ECL

Nut for aluminium profile, Steel square nut with tab



NIN

Self-locking nut, Steel



ZDB

Machined plastic bevel gear, 2:1



GE

Toggle latches, Miniature



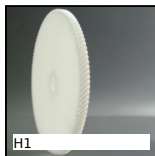
CHA1056\_U4

Screw-in hinge, Section 40X40



TK\_UUOP

Topball self-aligning linear bearing, Topball self-aligning



H1

Crossed helical gear crossed axis at 90°, Machined plastic (delrin)



GSI

Stainless steel gas spring, Stainless steel



RT61ss

Self-centering locking Assembly, Medium/low torque



ACLEFS

Floor anchor for aluminium profile, Adjustable



PRF\_ART

Articulated bracket for use with aluminium profile, Standard

## Complementary products



BDP2R

Adjustable support arm, Increased grip



BDPR

Holding arm, Rigid