

Pin for magnetic bush

BDM

Fast and light magnetic locking

- Pin for magnetic bush

- Fastening element used to hold panels or thin plates. The pin is held in the bush housing by a magnet.
- Materials:
Natural finish steel

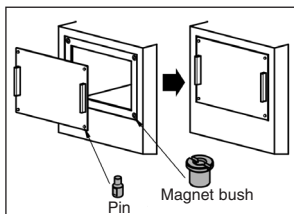
Info

- The pin is attracted to the magnetic bush **BDM6-7/DLL**.
- Mounting option with nut (not included) or by screwing directly into the workpiece.

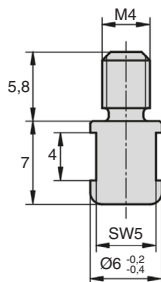
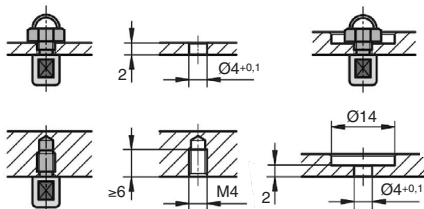


Accessory

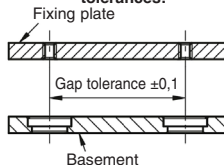
- Mounting pin **BDM6-7/DLL**



Typical application:
Quick assembly or removal of valves



Recommended mounting tolerances:



DISCOUNTS

Qty	1+	4+	8+
Disc. Price	-5%	On request	On request

Part N°	Shear force (kN)	Price per unit
BDM6-7	0.9	1 to 3 3,14 €

*Depending on availability - Dimensions in mm

Pin for magnetic bush

Fast and light magnetic locking **BDM6-7**

- Magnetic bush

- The pin BDM6-7 is held in the bush housing by a magnet which holds it with the specified clamping force.
- Materials:
Body in stainless steel natural finish
Neodymium magnet
- Working temperature range: max 80°C

Assembly

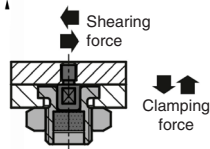
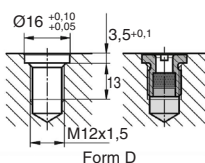
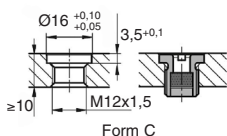
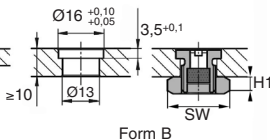
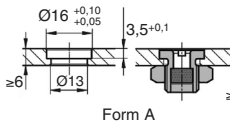
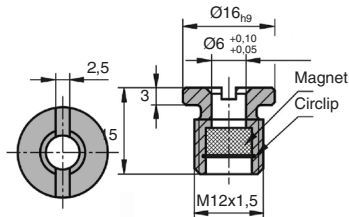
- Form A: min. plate thickness 6 mm.
- Form B: max. plate thickness 10 mm.
- Form C: plate thickness > 10 mm.
- Form D: blind hole.

Info

- Repeatability +/-0.25mm

Accessory

- Pin for magnetic bush BDM6-7



DISCOUNTS

Qty	1+	4+	8+
Disc. Price		-5%	On request

Part N°	Clamping force (N)	Shearing force (kN)	H1	SW	Price per unit 1 to 3
BDM6-7/DLL	7	0.8	-	-	29,73 €
DLL-M12-EC/SS	Nut for BDM6-7/DLL		6	19	0,68 €
DLL-M16-TOOL	Assembly tools for BDM6-7/DLL				20,62 €

*Depending on availability - Dimensions in mm