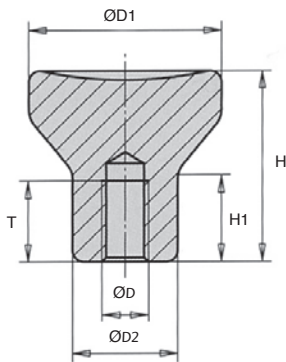


- Suitable for linear (push/pull) operations
- Material:
Stainless steel 303
Finish: Electrolytically polish

Economical range



DISCOUNTS

Qty	1+	10+	20+	50+
Disc. List	-10%	-20%	On request	

Part number	ØD	ØD1	ØD2	H	H1	T	Stock*	Price each 1 to 9
BCH3-18/SS	M3	18	10	18	8,6	7,5	✓	8,99 €
BCH4-21/SS	M4	21	12	21	10,0	10,0	✓	9,84 €
BCH5-21/SS	M5	21	12	21	10,0	12,5	✓	10,59 €
BCH6-25/SS	M6	25	14	25	12,0	12,0	✓	11,78 €
BCH8-33/SS	M8	33	18	33	16,0	16,0	✓	17,24 €

*Depending on availability - Dimensions in mm

Our other products



RPB

Ball screw bearing unit, Support



GE_ES_2RS

Spherical bushing, Steel / steel with seals



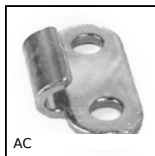
SFWR

End support, Surface mounting



YG0

HEAVY DUTY spur gear, Steel 35NCD6



AC

Strike for toggle latch, 12mm



BPLE

Ball transfer unit push fit, Light



LRRR

Latch with locking system, Aluminium



CHAsb28

Roll of hinge without pin, Plastic hinge



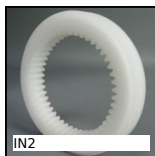
BOX-WM

Box set of washer - DIN125, Box set of steel washers



PRF_RR

Coupling bar for aluminium profile, Coupling bar



IN2

Internal gear, Machined plastic (delrin)



SDC_{ss}

Positioning sleeve for indexing pin, For pin Ø4 to Ø12

Complementary products