

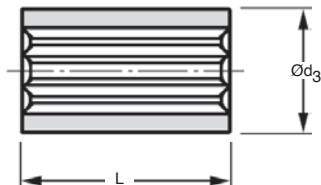
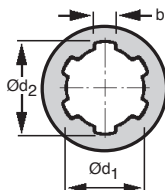
- Suitable for transmitting high torque values

- Material:

Steel C45

Accessories

- Steel or stainless steel splined shaft



DISCOUNTS

Qty	1+	10+	20+	30+	40+
Disc.	List	-15%	-20%	-30%	On request

Part number	Number of splines	$\varnothing d_1$	$\varnothing d_2$	b	L		$\varnothing d_3$	Stock*	Price each 1 to 9
					total length	splined length			
BCA6-14	6	11,00	14,00	3,00	40	30	25	✓	11,80 €
BCA6-16	6	13,00	16,00	3,50	40	40	28	✓	11,10 €
BCA6-20	6	16,00	20,00	4,00	50	50	30	✓	11,10 €
BCA6-22	6	18,00	22,00	5,00	50	50	32	✓	11,10 €
BCA6-25/40	6	21,00	25,00	5,00	40	40	38	✓	13,08 €
BCA6-25	6	21,00	25,00	5,00	60	60	38	✓	13,08 €
BCA6-28	6	23,00	28,00	6,00	60	60	38	✓	13,59 €
BCA6-32	6	26,00	32,00	6,00	60	60	42	✓	13,59 €
BCA6-34	6	28,00	34,00	7,00	60	60	45	✓	15,25 €
BCA8-38	8	32,00	38,00	6,00	60	60	55	✓	22,28 €
BCA8-42	8	36,00	42,00	7,00	70	70	60	✓	26,07 €
BCA8-48	8	42,00	48,00	8,00	70	70	65	✓	32,39 €
BCA8-54	8	46,00	54,00	9,00	80	80	70	✓	43,20 €

*Depending on availability - Dimensions in mm

Our other products



PSG125HC

Skive hobbed spur gears - precision range, Case hardened steel 20NCD2



VRC1

Retaining clamp, single sided, Single sided



INS_SS

Self tapping stainless steel insert, 316 stainless steel



SVT30

Screwjack with travelling screw, with translating screw



PSG25S

Spur gear - precision range, Stainless steel 316



PRF_CHA

Hinge for aluminium profile, Surface mounting hinge



VDSCB

Sliding lock adjustment system, Blocking wedge for sliding lock for ...



PO

Pull handle - Multi-sector, Tapped recessed insert



CCLSS

Stainless steel wire thimble, Stainless steel



SRG

Adjustable latch clamp with strike plate, Stroke from



WW16

Drylin® W slide, slide assembly



CLQ

12.7mm wide steel feeler strip on rolls, Feeler strip on rolls

Complementary products



ACA

Steel splined shaft, Steel



ACAss

Stainless steel splined shaft, Stainless steel



BCAss

Stainless steel splined bush, Inox