

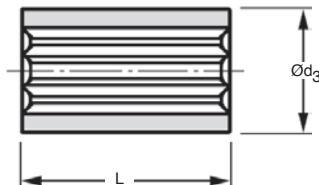
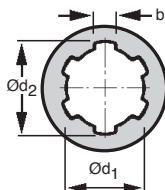
- Suitable for transmitting high torque values

- Material:

Steel C45

Accessories

- Steel or stainless steel splined shaft



DISCOUNTS

Qty	1+	10+	20+	30+	40+
Disc.	List	-15%	-20%	-30%	On request

Part number	Number of splines	$\varnothing d_1$	$\varnothing d_2$	b	L		$\varnothing d_3$	Stock*	Price each 1 to 9
					total length	splined length			
BCA6-14	6	11,00	14,00	3,00	40	30	25	✓	11,80 €
BCA6-16	6	13,00	16,00	3,50	40	40	28	✓	11,10 €
BCA6-20	6	16,00	20,00	4,00	50	50	30	✓	11,10 €
BCA6-22	6	18,00	22,00	5,00	50	50	32	✓	11,10 €
BCA6-25/40	6	21,00	25,00	5,00	40	40	38	✓	13,08 €
BCA6-25	6	21,00	25,00	5,00	60	60	38	✓	13,08 €
BCA6-28	6	23,00	28,00	6,00	60	60	38	✓	13,59 €
BCA6-32	6	26,00	32,00	6,00	60	60	42	✓	13,59 €
BCA6-34	6	28,00	34,00	7,00	60	60	45	✓	15,25 €
BCA8-38	8	32,00	38,00	6,00	60	60	55	✓	22,28 €
BCA8-42	8	36,00	42,00	7,00	70	70	60	✓	26,07 €
BCA8-48	8	42,00	48,00	8,00	70	70	65	✓	32,39 €
BCA8-54	8	46,00	54,00	9,00	80	80	70	✓	43,20 €

*Depending on availability - Dimensions in mm

Our other products



BHEX

Hexagonal cap, Black technopolymer



VP

Small 6 lobe threaded handle - male, Duroplast - Steel



PRF4590

Standard aluminium profile, 45 x 90 mm



BT70

Self-centering locking Assembly, Medium/high torque



FF30

Offset spur gear reducer, from 21.50 to 83 Nm



MDR_SS

Stainless steel Dee shackle with eye bolt, Stainless steel



BOX-TOR-D

Box set of Nitrile O-rings in nitrile, 18.00 x 2.00mm to 50.00 x 5.00



BH02

Single housed bearing assembly, Bearing secured with circlips



PLM-20SC

Threaded cylindrical magnet, With threaded hole



G4-ECO

Eco range Spur gear, Steel C45



ZBconique

Machined plastic bevel gear, 1:1



J65

Spur gear coaxial gearbox, from 0.80 to 2.95 Nm - In-line

Complementary products



ACA

Steel splined shaft, Steel



ACAss

Stainless steel splined shaft, Stainless steel



BCAss

Stainless steel splined bush, Inox