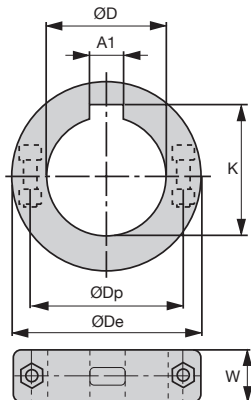
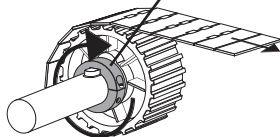
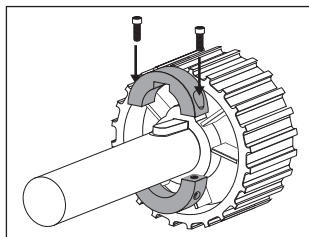


- 2 part locking collar
- Smooth or grooved bore
- Materials:
Body: reinforced polyamide
Screws: stainless steel 304



DISCOUNTS

Qty	1+	40+	100+	200+	300+
Disc.	List	-5%	-10%	-15%	On request

Part number		ØD	A1	ØDe	ØDp	W	K	Weight (kg)	Stock*	Price each. 1 à 39	
smooth	grooved									smooth	grooved
BAP-25	BAP-25K	25	8	45	35	14	28,3	0,02	✓	3,15 €	5,28 €
BAP-30	BAP-30K	30	8	55	45	16	33,3	0,03	✓	3,74 €	5,80 €
BAP-35	BAP-35K	35	10	60	47	16	38,3	0,03	✓	4,04 €	6,10 €
BAP-40	BAP-40K	40	12	64	51	18	43,3	0,04	✓	4,04 €	6,10 €

*Subject to available stocks - Dimensions in mm

Our other products



PW_PWG2
Worm - precision range, Stainless steel



BPTRW
Cap for round tube to be welded, To be welded



DOMI30
Accessories, Turntable



BLM
Spring loaded plunger with ball tip, Stainless steel body



DB
Steel bevel gear, 2:1



SSDB
Stainless steel bevel gear, 2:1



PSG125HC
Skive hobbed spur gears - precision range, Case hardened steel 20NCD2



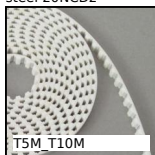
F7-I
Multifunction display, With internal sensor



MC
Self-compensating shock-absorber, Self-



BH01
Single housed bearing, Bearing fitted



T5M T10M
T type timing belt per metre, T5 Steel cored



BAC105
Storage bin, 8mm

Complementary products



BAP
Plastic clamping collar, Ø10 - Ø20



PR880
Idler sprocket for slat top chain, Range 880



PT820
Drive sprocket for slat top chain, Ranges 820 and 815