

Angular clamp



BAN

For profile systems

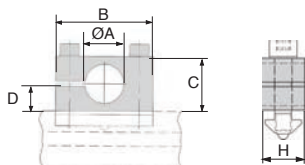
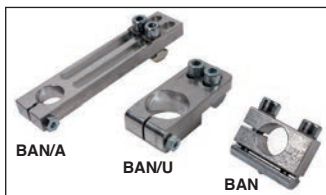
- Easy to add to most profiles
- Material :
Aluminium
- Fixing kit not supplied

Advantages

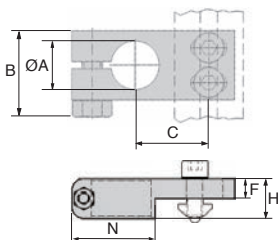
- Wide range of assembly possibilities
- **Angular clamp** : space saving when assembling compact
- **Universal angular clamp** : Compatible with 20mm and 300 mm profile systems with oblong holes
- **Adjustable angular clamp** : Flexible positioning of gripping elements due to use of rectangular holes

Accessories

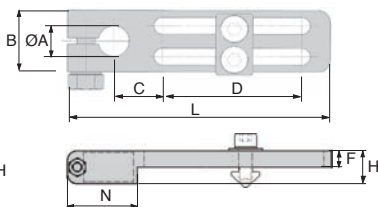
- PRF-ECLM8 nut
- M8 screw, length 20-22mm



Angular clamp



Universal angular clamp



Adjustable angular clamp

DISCOUNTS

Qty	1+	10+	30+
Disc.	List	-5%	On request

Part number	Type	ØA	B	C	D	L	H	F	N	Weight (g)	Price each 1 to 9
BAN-20	-	20	45	24,5	12	-	20	-	-	103	28,20 €
BAN-30	-	30	68	34	17	-	20	-	-	172	33,25 €
BAN-20/U	universal	20	30	32-42	-	-	20	10	33	114	28,19 €
BAN-30/U	universal	30	35	37-47	-	-	20	10	42	122	34,56 €
BAN-20/A	adjustable	20	30	21	100	130	12,5	-	-	140	34,75 €
BAN-30/A	adjustable	30	35	25,5	100	159	20	10	42	213	40,44 €

Dimensions in mm

Our other products



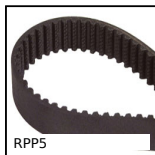
CHAC4040SS

Square hinge with riveted pin, drilled, Square with riveted pin, dri...



TMR

Rigid manual tensioner, Adjustable



RPP5

RPP heavy duty timing belt, RPP5



PRF_BV

Screw block, Panel addition and fastening



SCE

U-shaped cable clamp, Steel



LVT

Miniature motorised actuator 1A, 1 ampere



WJUM10

Drylin® W bearing block, Slide



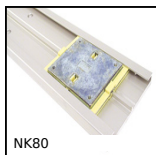
GE_ET_2RS

Spherical bushing, Hard chromium / Teflon contact with seals



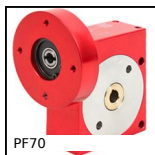
EFSM

igubal® flange bearing, Polymer



NK80

Drylin®N miniature guiding system, Width 80mm



PF70

Worm and wheel gear reducer, up to 164 Nm



OP6

Mechanical digital position indicator, 5 numbers

Complementary products



BAN

Angular clamp, Universal



PRF_ECL

Nut for aluminium profile, Steel square nut with tab