

Angular clamp



BAN

For profile systems

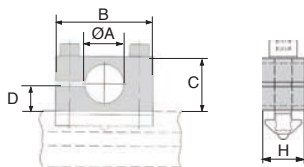
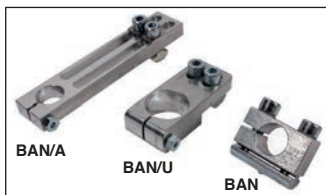
- Easy to add to most profiles
- Material :
Aluminium
- Fixing kit not supplied

Advantages

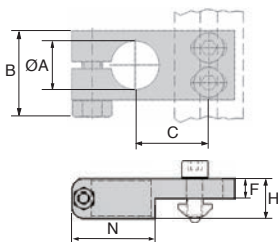
- Wide range of assembly possibilities
- **Angular clamp** : space saving when assembling compact
- **Universal angular clamp** : Compatible with 20mm and 300 mm profile systems with oblong holes
- **Adjustable angular clamp** : Flexible positioning of gripping elements due to use of rectangular holes

Accessories

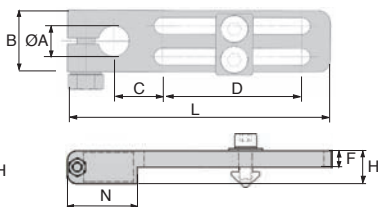
- PRF-ECLM8 nut
- M8 screw, length 20-22mm



Angular clamp



Universal angular clamp



Adjustable angular clamp

DISCOUNTS

Qty	1+	10+	30+
Disc.	List	-5%	On request

Part number	Type	ØA	B	C	D	L	H	F	N	Weight (g)	Price each 1 to 9
BAN-20	-	20	45	24,5	12	-	20	-	-	103	28,20 €
BAN-30	-	30	68	34	17	-	20	-	-	172	33,25 €
BAN-20/U	universal	20	30	32-42	-	-	20	10	33	114	28,19 €
BAN-30/U	universal	30	35	37-47	-	-	20	10	42	122	34,56 €
BAN-20/A	adjustable	20	30	21	100	130	12,5	-	-	140	34,75 €
BAN-30/A	adjustable	30	35	25,5	100	159	20	10	42	213	40,44 €

Dimensions in mm

Our other products



MCLred

Reducing sleeve
female/female,
Cylindrical - steel



NAST

Cam follower without
axial guide, With
interior ring



KKSS

Rounded end feather
key, Stainless steel



BOXINS300

Box set of self tapping
inserts, Boxed set -
For hard materials



BAG0

Locking rings in
stainless steel,
Stainless steel



PCLA_M

Technopolymer
clamping lever -
female, Plastic



DB

Steel bevel gear, 2:1



BABFCFO

Ball pin socket,
Mounting collar with a
round flange



T5P_T10P

Connecting plate for T
type timing belts, T5



CLG3

Moulded plastic spur
gear, Moulded plastic
(nylon)



LVT

Miniature motorised
actuator 4A, 4 amperes



LFM

Steel leadscrew,
Medium carbon steel -
1 thread

Complementary products



BAN

Angular clamp,
Adjustable



PRF_ECL

Nut for aluminium
profile, Steel square
nut with tab