

Split shaft collar with clamp lever

BAG-MI

Steel

- Ensures a uniform distribution of the clamping force
- Clamps securely to any type of shaft
- Material:

Burnished steel (S250Pb)

Repeated operations

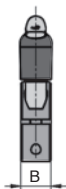
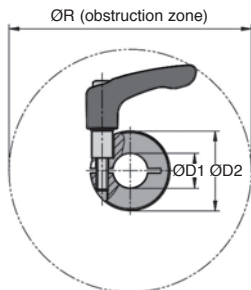


Advantages

- Fits perfectly on to the shaft with a high clamping force but without risk of damage

Info.

- Recommended shaft tolerance: h11



DISCOUNTS

| Qty | 1+ | 6+ | 20+ | 40+ |
|-------|----|------|------|------------|
| Disc. | | -15% | -20% | On request |

| Part number | ØD1 | ØD2 | B | ØR | Stock* | Price each 1 to 5 |
|-------------|-----|-----|----|-------|--------|-------------------|
| BAG1-010-MI | 10 | 24 | 9 | 44,1 | - | 14,83 € |
| BAG1-012-MI | 12 | 28 | 11 | 90,4 | ✓ | 15,16 € |
| BAG1-015-MI | 15 | 34 | 13 | 105,0 | - | 16,38 € |
| BAG1-016-MI | 16 | 34 | 13 | 105,0 | ✓ | 16,73 € |
| BAG1-018-MI | 18 | 36 | 13 | 105,7 | - | 17,46 € |
| BAG1-020-MI | 20 | 40 | 15 | 103,8 | ✓ | 18,26 € |
| BAG1-022-MI | 22 | 42 | 15 | 104,2 | - | 18,26 € |
| BAG1-025-MI | 25 | 45 | 15 | 104,8 | ✓ | 19,34 € |
| BAG1-028-MI | 28 | 48 | 15 | 106,8 | - | 19,34 € |
| BAG1-030-MI | 30 | 54 | 15 | 112,6 | ✓ | 22,20 € |
| BAG1-040-MI | 40 | 60 | 15 | 113,2 | - | 25,18 € |
| BAG1-050-MI | 50 | 78 | 19 | 150,2 | - | 46,79 € |

Dimensions in mm

Our other products



SH2

Parallel axis helical gear, Machined plastic (delrin)



STL

Guidance brush - Rail, Rail



R203

Die spring ISO10243, Light



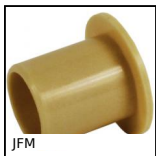
PGM52-M4

Pull handle, Brass



GTCS5

Belt tensioner, For use in hostile environments



JFM

Flanged polymer bush, Universal polymer



NSP

Right angled support clamp, Right angled support clamp



DPAR_DKON

Conical elasto buffer, Steel



CHMR90

Worm and wheel gear reducer, up to 540 Nm



BH02

Single housed bearing assembly, Bearing secured with circlips



E15

Right angle helical reducers, from 0.40 to 2.53 Nm



PTA40ssEB

Articulated foot whit sheet metal base Ø40, Ø 40

Complementary products



BAG-MISS

Split shaft collar with clamp lever, Stainless steel



BAG

Steel Clamping collar, Steel