

- Self locking

- Materials:

Body: Stainless steel 303, natural finish

Spring: Stainless steel 301

Pin: Stainless steel

- Max working temp: 250°C

Advantages

- Handle shape protects button to prevent any inadvertent operation

- Press to unlock

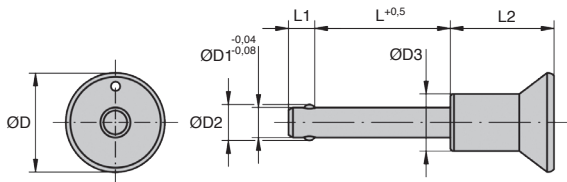
- Quick to insert, block, change and stop

- Simply and easily released when performing repetitive operations

- Corrosion resistant

Accessory

- CDR retaining cable



DISCOUNTS

Qty	1+	6+	10+
Disc.	List	-5%	On request

Part number	ØD	ØD1	ØD2	ØD3	L	L1	L2	For bore H11	Double shear resistance (kN)	Price each 1 to 5
BAB5-10/P/SS	25	5	5,5	14	10	6	26,5	5	15	17,64 €
BAB5-15/P/SS	25	5	5,5	14	15	6	26,5	5	15	17,98 €
BAB5-20/P/SS	25	5	5,5	14	20	6	26,5	5	15	18,31 €
BAB5-25/P/SS	25	5	5,5	14	25	6	26,5	5	15	19,67 €
BAB5-30/P/SS	25	5	5,5	14	30	6	26,5	5	15	19,94 €
BAB6-10/P/SS	25	6	6,85	14	10	7	26,5	6	22	18,81 €
BAB6-15/P/SS	25	6	6,85	14	15	7	26,5	6	22	19,44 €
BAB6-20/P/SS	25	6	6,85	14	20	7	26,5	6	22	19,89 €
BAB6-25/P/SS	25	6	6,85	14	25	7	26,5	6	22	20,33 €
BAB6-30/P/SS	25	6	6,85	14	30	7	26,5	6	22	21,07 €
BAB6-35/P/SS	25	6	6,85	14	35	7	26,5	6	22	21,59 €
BAB6-40/P/SS	25	6	6,85	14	40	7	26,5	6	22	22,04 €
BAB6-45/P/SS	25	6	6,85	14	45	7	26,5	6	22	23,03 €
BAB6-50/P/SS	25	6	6,85	14	50	7	26,5	6	22	23,54 €
BAB8-20/P/SS	25	8	9,5	14	20	8	26,5	8	38	20,09 €
BAB8-25/P/SS	25	8	9,5	14	25	8	26,5	8	38	20,51 €
BAB8-30/P/SS	25	8	9,5	14	30	8	26,5	8	38	20,91 €
BAB8-35/P/SS	25	8	9,5	14	35	8	26,5	8	38	21,33 €
BAB8-40/P/SS	25	8	9,5	14	40	8	26,5	8	38	21,75 €
BAB8-45/P/SS	25	8	9,5	14	45	8	26,5	8	38	22,17 €
BAB8-50/P/SS	25	8	9,5	14	50	8	26,5	8	38	22,59 €
BAB10-20/P/SS	33	10	12	19	20	9	34,6	10	60	21,43 €
BAB10-25/P/SS	33	10	12	19	25	9	34,6	10	60	21,71 €
BAB10-30/P/SS	33	10	12	19	30	9	34,6	10	60	22,14 €
BAB10-35/P/SS	33	10	12	19	35	9	34,6	10	60	22,54 €
BAB10-40/P/SS	33	10	12	19	40	9	34,6	10	60	22,91 €
BAB10-45/P/SS	33	10	12	19	45	9	34,6	10	60	23,26 €
BAB10-50/P/SS	33	10	12	19	50	9	34,6	10	60	24,95 €
BAB10-60/P/SS	33	10	12	19	60	9	34,6	10	60	26,92 €
BAB12-25/P/SS	33	12	14,5	19	25	10	34,6	12	86	26,19 €
BAB12-30/P/SS	33	12	14,5	19	30	10	34,6	12	86	26,75 €
BAB12-35/P/SS	33	12	14,5	19	35	10	34,6	12	86	27,24 €
BAB12-40/P/SS	33	12	14,5	19	40	10	34,6	12	86	27,78 €
BAB12-45/P/SS	33	12	14,5	19	45	10	34,6	12	86	28,30 €
BAB12-50/P/SS	33	12	14,5	19	50	10	34,6	12	86	29,36 €
BAB12-60/P/SS	33	12	14,5	19	60	10	34,6	12	86	31,53 €
BAB12-70/P/SS	33	12	14,5	19	70	10	34,6	12	86	33,78 €
BAB12-80/P/SS	33	12	14,5	19	80	10	34,6	12	86	36,15 €
BAB16-30/P/SS	33	16	19	20	30	13,3	34,6	16	153	68,25 €
BAB16-35/P/SS	33	16	19	20	35	13,3	34,6	16	153	68,68 €
BAB16-40/P/SS	33	16	19	20	40	13,3	34,6	16	153	69,16 €
BAB16-45/P/SS	33	16	19	20	45	13,3	34,6	16	153	70,94 €
BAB16-50/P/SS	33	16	19	20	50	13,3	34,6	16	153	72,89 €
BAB16-60/P/SS	33	16	19	20	60	13,3	34,6	16	153	75,59 €
BAB16-70/P/SS	33	16	19	20	70	13,3	34,6	16	153	79,19 €
BAB16-80/P/SS	33	16	19	20	80	13,3	34,6	16	153	82,77 €

Dimensions in mm

Our other products



DOMI120
Domino 120
adjustable slide, Slide
DOMILINE 120



HTD14M_85
HTD Heavy duty
timing pulley, HTD14
Cast



PRF19_E
Bracket for aluminium
profile, PRF19 to
PRF45



GG2
Ground spur gear,
Heat treated steel



AZY
Cylindrical elasto
mount, Steel



BOX-NINA
Self locking nut -
DIN985, Box set of
steel nuts



PTR
Idler chain sprocket,
For standard
applications



ACL-APB
Closing system for
aluminium profile,
Magnetic door stop



MEF
Cylindrical sintered
ferrous bush, Self-
lubricating FP20



HRV
V- rail guidance
Simple Select®
system, Rail with



MEFC
Flanged sintered
ferrous bush, Self-
lubricating FP20



DKGS
Backlash free
coupling Gerwah®,
from 0.5 to 3Nm

Complementary products



CDR
Retaining cable for
ball pin, Retaining
cable



BABS303
303 Stainless steel
compact ball pin,
Stainless steel 303