

# Clamping pin for blind hole



**BABTBSS**

**Stainless steel 303**

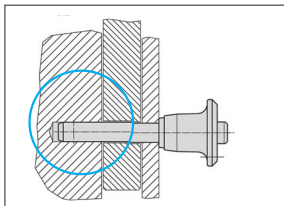
- **Clamp lock pins with button handle**
- For rapid fastening, locking, adjusting, replacing, and securing in blind holes (H11) without additional locating bushings
- Quick and easy to release for connections which are made repeatedly
- Materials :
  - Pin stainless steel 303
  - Handle Black aluminium
- Working T°: -30°C to +150°C



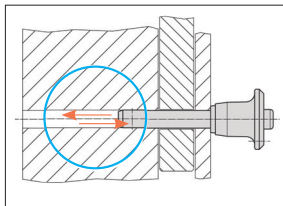
## Operation

Clamp lock pins can be used in blind holes. The holding forces achieved in an H11 borehole depends on the material of the counterpart:

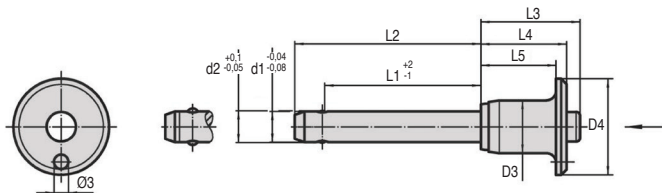
- Steel, hardened: min. 30 N
- Steel, soft: min. 120 N
- Stainless steel, soft: min. 120 N
- Aluminium alloy: min. 250 N



**Ideal for blind hole**



**Locking without predetermined position. No special machining required.**



## DISCOUNTS

Qty	1+	6+	10+
Disc.	List	-5%	On request

Part number	ØD1	L	ØD2	ØD3	ØD4	L2	L3	L4	L5	Shearing resistance two-shear (kN)	Weight (g)	Price each 1 à 5
BAB6-10/TB/SS	6	10	6,2	11,3	20	17,4	20,7	17,6	14,6	21	13	
BAB6-20/TB/SS	6	20	6,2	11,3	20	27,4	20,7	17,6	14,6	21	15	
BAB6-40/TB/SS	6	40	6,2	11,3	20	47,4	20,7	17,6	14,6	21	19	
BAB6-60/TB/SS	6	60	6,2	11,3	20	67,4	20,7	17,6	14,6	21	23	
BAB8-10/TB/SS	8	10	8,3	14,1	25	18,6	27,3	22,6	18,6	38	25	
BAB8-20/TB/SS	8	20	8,3	14,1	25	28,6	27,3	22,6	18,6	38	29	
BAB8-40/TB/SS	8	40	8,3	14,1	25	48,6	27,3	22,6	18,6	38	36	
BAB8-60/TB/SS	8	60	8,3	14,1	25	68,6	27,3	22,6	18,6	38	43	
BAB8-80/TB/SS	8	80	8,3	14,1	25	88,6	27,3	22,6	18,6	38	51	
BAB10-20/TB/SS	10	20	10,3	14,1	25	30,0	27,3	22,6	18,6	60	35	
BAB10-40/TB/SS	10	40	10,3	14,1	25	50,0	27,3	22,6	18,6	60	47	
BAB10-60/TB/SS	10	60	10,3	14,1	25	70,0	27,3	22,6	18,6	60	59	
BAB10-80/TB/SS	10	80	10,3	14,1	25	90,0	27,3	22,6	18,6	60	70	
BAB10-100/TB/SS	10	100	10,3	14,1	25	110,0	27,3	22,6	18,6	60	82	
BAB12-20/TB/SS	12	20	12,3	17,7	35	31,0	33,2	27,3	22,3	87	66	
BAB12-40/TB/SS	12	40	12,3	17,7	35	51,0	33,2	27,3	22,3	87	82	
BAB12-60/TB/SS	12	60	12,3	17,7	35	71,0	33,2	27,3	22,3	87	100	
BAB12-80/TB/SS	12	80	12,3	17,7	35	91,0	33,2	27,3	22,3	87	117	
BAB12-100/TB/SS	12	100	12,3	17,7	35	111,0	33,2	27,3	22,3	87	134	
BAB16-30/TB/SS	16	30	16,5	23,4	40	44,4	42,2	34,5	28,5	155	150	
BAB16-60/TB/SS	16	60	16,5	23,4	40	74,4	42,2	34,5	28,5	155	196	
BAB16-90/TB/SS	16	90	16,5	23,4	40	104,4	42,2	34,5	28,5	155	242	
BAB16-120/TB/SS	16	120	16,5	23,4	40	134,4	42,2	34,5	28,5	155	290	

Dimensions in mm

## Our other products



T5M T10M

T type timing belt per metre, T5 Steel cored polyurethane



SCR

Suction cup threaded insert, Insert for suction cup - Socket screw



PTR55

Idler chain sprocket, For hostile environments



UGH32

H Type Guide units, For Ø32 actuators



LRRss

Latch, Spring loaded latch - stainless steel



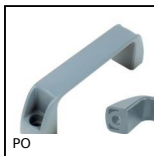
BGC

Oldham coupling, Clamp



PMC150\_M16

Anti-vibration machine mount, Square base plate



PO

Pull handle - Multi-sector, Smooth hole



DER90

Stainless steel AC asynchronous motor 1.1 - 1.5kW, 1.1 to



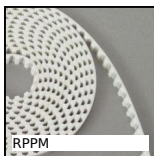
YG2

HEAVY DUTY spur gear, Steel 35NCD6



ZBconique

Machined plastic bevel gear, 1:1



RPPM

RPP type belt per metre, RPP5 Steel cored polyurethane

Complementary products