

# Stainless steel clamping pin

## BABs

## Compact

### - Auto-blocking

### - Material:

Pin: Hardened stainless steel (630)  
with resistant finish  
Spring: stainless steel

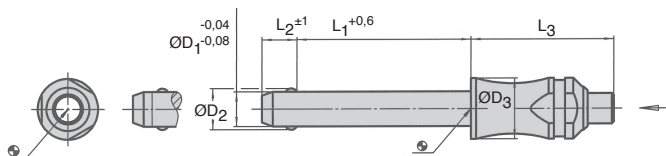
### - Maximum working temperature: 250°C

### Advantages

- Released by simple push action. For locking pieces in places easily and quickly
- Quick release mechanism for repeated operations
- Hard wearing treated pin resists wear (Stainless steel 1.4542)
- Works under heavy load conditions
- Corrosion resistant
- Compact size with ergonomically designed handle



Press to unlock

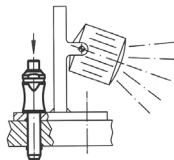
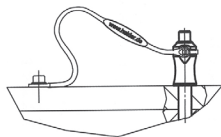
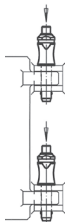


### DISCOUNTS

Qty	1+	6+	10+
Disc.	List	-5%	On request

Part number	ØD1	L1	ØD2	ØD3	L2	L3	Fir bore H11	Double shear strength (kN)	Weight (g)	Stock*	Price each 1 to 5
BAB5-10/S	5	10	5,5	10	6,0	26,2	5	24	15	✓	29,05 €
BAB5-15/S	5	15	5,5	10	6,0	26,2	5	24	16	✓	29,05 €
BAB5-20/S	5	20	5,5	10	6,0	26,2	5	24	17	-	29,05 €
BAB5-25/S	5	25	5,5	10	6,0	26,2	5	24	18	-	29,05 €
BAB5-30/S	5	30	5,5	10	6,0	26,2	5	24	19	-	30,75 €
BAB6-10/S	6	10	7,0	10	7,0	26,2	6	35	17	-	29,34 €
BAB6-15/S	6	15	7,0	10	7,0	26,2	6	35	18	✓	29,34 €
BAB6-20/S	6	20	7,0	10	7,0	26,2	6	35	19	-	29,34 €
BAB6-25/S	6	25	7,0	10	7,0	26,2	6	35	20	✓	29,34 €
BAB6-30/S	6	30	7,0	10	7,0	26,2	6	35	21	✓	32,57 €
BAB6-35/S	6	35	7,0	10	7,0	26,2	6	35	22	-	32,57 €
BAB6-40/S	6	40	7,0	10	7,0	26,2	6	35	23	-	32,57 €
BAB6-45/S	6	45	7,0	10	7,0	26,2	6	35	24	-	32,57 €
BAB6-50/S	6	50	7,0	10	7,0	26,2	6	35	25	-	32,57 €

\*Subject to availability - Dimensions in mm



## DISCOUNTS

Qty	1+	6+	10+
Disc.	List	-5%	On request

Part number	ØD1	L1	ØD2	ØD3	L2	L3	For bore H11	Double shear strength (kN)	Weight (g)	Stock*	Prix Uni. 1 à 5
BAB8-20/S	8	20	9,6	14	8,2	33,1	8	63	23	-	31,44 €
BAB8-25/S	8	25	9,6	14	8,2	33,1	8	63	25	-	31,44 €
BAB8-30/S	8	30	9,6	14	8,2	33,1	8	63	27	-	35,32 €
BAB8-35/S	8	35	9,6	14	8,2	33,1	8	63	29	-	35,32 €
BAB8-40/S	8	40	9,6	14	8,2	33,1	8	63	30	-	35,32 €
BAB8-45/S	8	45	9,6	14	8,2	33,1	8	63	32	-	35,32 €
BAB8-50/S	8	50	9,6	14	8,2	33,1	8	63	34	-	35,32 €
BAB10-20/S	10	20	12,0	14	9,6	33,1	10	100	35	-	48,23 €
BAB10-25/S	10	25	12,0	14	9,6	33,1	10	100	37	-	48,23 €
BAB10-30/S	10	30	12,0	14	9,6	33,1	10	100	40	-	50,48 €
BAB10-35/S	10	35	12,0	14	9,6	33,1	10	100	43	-	50,48 €
BAB10-40/S	10	40	12,0	14	9,6	33,1	10	100	46	-	50,48 €
BAB10-45/S	10	45	12,0	14	9,6	33,1	10	100	49	-	50,48 €
BAB10-50/S	10	50	12,0	14	9,6	33,1	10	100	52	-	50,48 €
BAB10-60/S	10	60	12,0	14	9,6	33,1	10	100	56	-	53,20 €
BAB12-25/S	12	25	14,5	20	10,6	39,5	12	144	51	-	49,08 €
BAB12-30/S	12	30	14,5	20	10,6	39,5	12	144	55	✓	51,23 €
BAB12-35/S	12	35	14,5	20	10,6	39,5	12	144	59	-	51,23 €
BAB12-40/S	12	40	14,5	20	10,6	39,5	12	144	64	✓	51,23 €
BAB12-45/S	12	45	14,5	20	10,6	39,5	12	144	68	-	51,23 €
BAB12-50/S	12	50	14,5	20	10,6	39,5	12	144	72	-	51,23 €
BAB12-60/S	12	60	14,5	20	10,6	39,5	12	144	80	-	53,87 €
BAB12-70/S	12	70	14,5	20	10,6	39,5	12	144	89	-	53,87 €
BAB12-80/S	12	80	14,5	20	10,6	39,5	12	144	98	-	56,32 €
BAB16-30/S	16	30	19,0	20	14,0	39,5	16	257	138	-	87,70 €
BAB16-35/S	16	35	19,0	20	14,0	39,5	16	257	147	✓	87,70 €
BAB16-40/S	16	40	19,0	20	14,0	39,5	16	257	156	-	87,70 €
BAB16-45/S	16	45	19,0	20	14,0	39,5	16	257	165	-	87,70 €
BAB16-50/S	16	50	19,0	20	14,0	39,5	16	257	175	✓	87,70 €
BAB16-60/S	16	60	19,0	20	14,0	39,5	16	257	193	✓	94,50 €
BAB16-70/S	16	70	19,0	20	14,0	39,5	16	257	212	-	94,50 €
BAB16-80/S	16	80	19,0	20	14,0	39,5	16	257	233	-	100,19 €
BAB20-60/S	20	60	25,0	28	20,5	50,1	20	403	338	-	199,91 €
BAB20-80/S	20	80	25,0	28	20,5	50,1	20	403	388	-	205,58 €
BAB20-100/S	20	100	25,0	28	20,5	50,1	20	403	438	-	217,27 €
BAB20-120/S	20	120	25,0	28	20,5	50,1	20	403	488	-	225,90 €

\*Subject to availability - Dimensions in mm

## Our other products



VTA

Vari-Tork® slip friction clutch, 0.53 to 1.32 Nm



M0

Worm and wheel set, Non hardened steel



ATZY

Diabolo shaped elastomeric mount, Steel



BAC105

Storage bin, 8mm



RJUM05

Drylin R® linear bearing housing, Closed - Slim



RVM14

Manual worm and wheel gearbox, Worm/wheel



BZY\_SS

Stainless steel cylindrical elastomeric mount, Stainless steel



VELM4

Screw-on base for hook-and-loop strip, Polyamide



KH

Linear bearing, Light



V3RA

3-spoked handwheel without handle, Polyamide



PT881

Drive sprocket for slat top chain, Range 881



GCL

Linear ball slide - Stainless steel balls, Chariot - from 516 N to 8...

## Complementary products



BABreceptacle

Ball pin socket, Socket



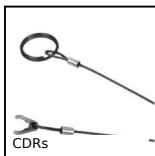
BABS303

303 Stainless steel compact ball pin, Stainless steel 303



AFA

Locking pin, with ring



CDRs

Retaining cable for ball pin, Retaining cable