

Mounting collar for ball pin

BABFC
BABFO

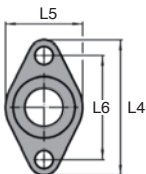
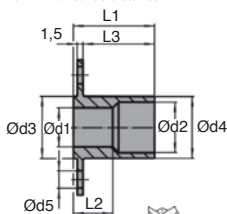
With a round or oval flange

- For use on thin sheet metal
- These collars offer a quick and securing method of mounting ball pins
- For the construction of boxes or other containers
- Material: 303, stainless steel

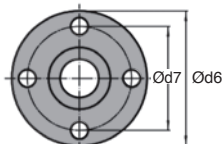


Fonctionnement

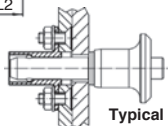
- The large contact surface area ensures that all the force is spread evenly over thin walled structures



BABFO :
Oval flange



BABFC :
Cylindrical flange



Typical application

DISCOUNTS

Qty	1+	6+	10+	25+
Disc.	List	-5%	-10%	On request

With cylindrical flange

Part number	Ød1	Ød2	Ød3		Ød4	Ød5	Ød6	Ød7	L1	L2	L3	Weight (g)	Price each 1 to 5
			-0,05	-0,1									
BAB5-8/FC/SS	5	8	10	9,9	3,4	25	19	12	5,4	9,5	9	19,01 €	
BAB6-8/FC/SS	6	8	10	9,9	3,4	25	19	13	5,3	10,5	9	19,01 €	
BAB8-10/FC/SS	8	10	12	11,9	4,5	30	22	19	10,3	16,5	14	21,15 €	
BAB10-13/FC/SS	10	13	16	15,9	4,5	35	27	21	10,2	18,5	24	23,38 €	
BAB12-15/FC/SS	12	15	19	18,9	4,5	40	30	27	15,2	24,5	41	26,60 €	
BAB16-20/FC/SS	16	20	24	23,9	5,5	50	40	30	15,3	27,5	63	31,25 €	

With oval flange

Part number	Ød1	Ød2	Ød3		Ød4	Ød5	L1	L2	L3	L4	L5	L6	Weight (g)	Price each 1 to 5
			-0,05	-0,1										
BAB5-8/FO/SS	5	8	10	9,9	3,4	12	5,4	9,5	25	15	19	6	21,95 €	
BAB6-8/FO/SS	6	8	10	9,9	3,4	13	5,3	10,5	25	15	19	6	21,95 €	
BAB8-10/FO/SS	8	10	12	11,9	4,5	19	10,3	16,5	30	18	22	10	24,58 €	
BAB10-13/FO/SS	10	13	16	15,9	4,5	21	10,2	18,5	35	20	27	19	27,19 €	
BAB12-15/FO/SS	12	15	19	18,9	4,5	27	15,2	24,5	40	24	30	34	30,41 €	
BAB16-20/FO/SS	16	20	24	23,9	5,5	30	15,3	27,5	50	30	40	52	33,65 €	

Dimensions in mm

Our other products



DCG

Suction cup, 2.5 bellows, natural rubber



MAX22

Motor-gearbox 12V and 24V DC, from 0,07 to 0,2Nm



PTAF80-PAMF80

Articulated fixable foot with pressed base Ø80, Ø 80



PRF3232

Standard aluminium profile, 32 x 32 mm



SEH

Horizontal stirrup toggle clamp, Horizontal stirrup clamp - steel



BLHM60

Right angled gearbox, double output shafts, up to 70 Nm



PTAF80-PAMF80

Articulated fixable foot with pressed base Ø80, Ø 80



CHA35

Hinge for aluminium profile, Hinge



DOMI50

Domino 50 adjustable slide, Slide DOMILINE 50



T2,5-BAR

T type tooth bar stock, T2.5



PAMF80EB

Articulated foot with sheet metal base Ø80, Articulated foot



HLC19

Right angle spiro bevel gearbox, Up to 43Nm

Complementary products



BABFCFO

Ball pin socket, Mounting collar with a round flange



BAB

Hardened Stainless steel ball pin, Stainless steel hardened



BABss

303 Stainless steel ball pin, 303 Stainless steel



BABV

Ball lock pins lockable, Stainless steel