

Lifting pin



BABA

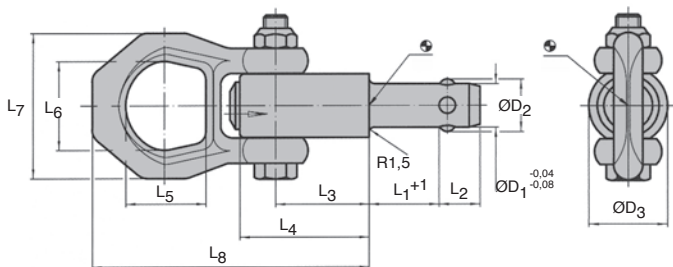
With lifting ring

- **Self locking**
- **Materials:**
 - Pin/shackle: Manganese-phosphate treated steel
 - Press bolt: Aluminium
 - Spring: stainless steel
- Max working temperature: +250°C



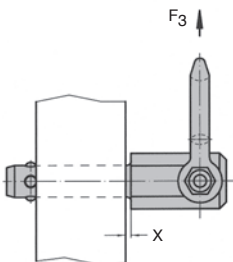
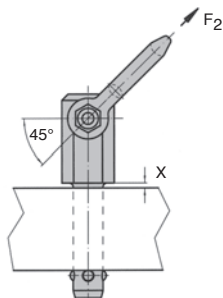
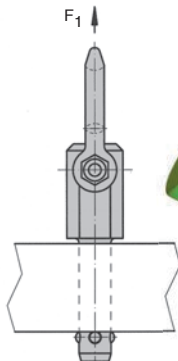
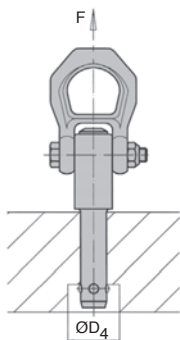
Advantages

- Corrosion resistant
- Quick and simple to use to carry workpieces with a moveable handle and protection against accidental release.
- An H11 toleranced borehole is all that is required, specially tapped holes in pieces to be machined are no longer required



Part number	ØD ₁	L ₁	ØD ₂	ØD ₃	ØD ₄ min.	L ₂	L ₃	L ₄	L ₅	L ₆	L ₇	L ₈	For bore diameter H11
BAB10-15/A	10	15	11,7	21,5	12,2	10,2	25,7	36,0	27	30	49	87,5	10
BAB10-25/A	10	25	11,7	21,5	12,2	10,2	25,7	36,0	27	30	49	87,5	10
BAB10-35/A	10	35	11,7	21,5	12,2	10,2	25,7	36,0	27	30	49	87,5	10
BAB10-50/A	10	50	11,7	21,5	12,2	10,2	25,7	36,0	27	30	49	87,5	10
BAB12-15/A	12	15	14,2	21,5	14,7	11,0	25,7	36,0	27	30	49	87,5	12
BAB12-25/A	12	25	14,2	21,5	14,7	11,0	25,7	36,0	27	30	49	87,5	12
BAB12-35/A	12	35	14,2	21,5	14,7	11,0	25,7	36,0	27	30	49	87,5	12
BAB12-50/A	12	50	14,2	21,5	14,7	11,0	25,7	36,0	27	30	49	87,5	12
BAB16-25/A	16	25	18,6	26,0	19,2	15,1	31,0	44,5	27	30	49	92,8	16
BAB16-50/A	16	50	18,6	26,0	19,2	15,1	31,0	44,5	27	30	49	92,8	16
BAB16-75/A	16	75	18,6	26,0	19,2	15,1	31,0	44,5	27	30	49	92,8	16

Dimensions in mm



DISCOUNTS

Qty	1+	3+	6+	10+
Disc.	List	-5%	-10%	On request

Part number	X min.	X max.	F ₁ [*] (kN)	F ₂ [*] (kN)	F ₃ [*] (kN)	Weight (g)	Price each 1 to 2
BAB10-15/A	1,5	10	2,7	2,4	2,1	223	127,17 €
BAB10-25/A	1,5	15	2,7	2,4	2,1	230	127,20 €
BAB10-35/A	1,5	25	2,7	2,4	2,1	240	127,17 €
BAB10-50/A	1,5	35	2,7	2,4	2,1	247	127,17 €
BAB12-15/A	1,5	10	3,5	3,2	2,8	231	138,24 €
BAB12-25/A	1,5	20	3,5	3,2	2,8	238	138,24 €
BAB12-35/A	1,5	25	3,5	3,2	2,8	240	138,24 €
BAB12-50/A	1,5	45	3,5	3,2	2,8	262	138,24 €
BAB16-25/A	1,5	20	4,8	4,5	4,1	306	153,16 €
BAB16-50/A	1,5	40	4,8	4,5	4,1	345	153,16 €
BAB16-75/A	1,5	55	4,8	4,5	4,1	384	153,16 €

For a quintuple safety factor - Dimensions in mm

Our other products



BWU

Compact precision slide, from 1510 N to 10500 N



D19 D29

Compression springs in metre length stainless steel, by the metre



CHMR110

Worm and wheel gear reducer, up to 980 Nm



PRT-TO

iglidur® slewing ring, With external teeth-Iglidur®, aluminium & S...



BPM-Z

Plastic slotted spring plunger with ball tip, Plastic body + stainle...



BABV

Ball lock pins lockable, Stainless steel



PSG08

Spur gear - precision range, Case hardened steel 20NCD2



BH02

Single housed bearing assembly, Bearing secured with circlips



SVT30

Screwjack with travelling screw, with



DZYSS

Stainless steel cylindrical stop,



BLHT60

Right angled gearbox, from 26 to 70 Nm



TB8

Cylindrical roller thrust bearing, Steel

Complementary products



BABreceptacle

Ball pin socket, Socket



BABam

Self-locking ball pin lifting ring for threaded hole, Self-locking