

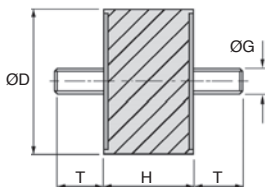
- Radial elasticity greater than axial elasticity.
- Cylinder worked under compression or shearing
- Materials:
 - Core: Steel plates
 - Cylinder: Rubber
- Hardness: NK 55-60 shore A
- Working temp: -40°C to +70°C

Uses

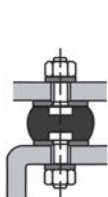
- Dampens sound and vibrations

Info.

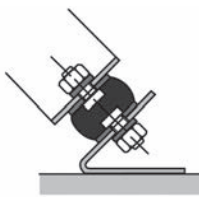
- Not sold individually, please contact us for details
- Values for loads and rigidity are given as a guide only



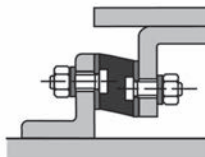
From size M3 upwards



Compression



Compression
Shearing



Shearing

DISCOUNTS **A**

Qty	1+	6+	20+	40+	100+
Disc.	List	-10%	-15%	-20%	On request

DISCOUNTS **B**

Qty	1+	6+	10+	15+	20+	50+
Disc.	List	-10%	-15%	-20%	-25%	On request

Part number	ØG	ØD	H	T	Compression		Shearing		Stock*	Price each 1 to 5
					stiffness (N/mm)	Max. load (N)	stiffness (N/mm)	Max. load (N)		
A-ZY3-8-8/SS	M3	8	8	6	-	-	-	-	✓	A 3,07 €
A-ZY4-10-10/SS	M4	10	10	10	44	43	9	15	✓	A 3,07 €
A-ZY4-15-7/SS	M4	15	7	10	174	95	29	35	✓	A 2,54 €
A-ZY4-15-8/SS	M4	15	8	10	160	95	27	35	✓	A 2,75 €
A-ZY4-15-10/SS	M4	15	10	10	124	95	24	35	✓	A 2,85 €
A-ZY4-15-15/SS	M4	15	15	12	61	95	13	35	✓	A 2,85 €
A-ZY4-15-20/SS	M4	15	20	13	-	-	-	-	✓	A 3,27 €
A-ZY5-15-15/SS	M5	15	15	8	61	95	24	35	✓	A 2,77 €
A-ZY6-20-8/SS	M6	20	8	18	307	170	36	60	✓	A 3,15 €
A-ZY6-20-10/SS	M6	20	10	18	-	-	-	-	✓	A 3,25 €
A-ZY6-20-15/SS	M6	20	15	18	130	170	24	60	✓	A 3,30 €
A-ZY6-20-20/SS	M6	20	20	18	-	-	-	-	✓	A 3,78 €
A-ZY6-20-25/SS	M6	20	25	18	85	170	17	60	✓	A 3,78 €
A-ZY6-25-10/SS	M6	25	10	18	750	280	74	95	✓	A 3,46 €
A-ZY6-25-15/SS	M6	25	15	18	-	-	-	-	✓	A 3,70 €
A-ZY6-25-20/SS	M6	25	20	18	-	-	-	-	✓	A 4,31 €
A-ZY6-25-25/SS	M6	25	25	18	-	-	-	-	✓	A 4,76 €
A-ZY8-30-15/SS	M8	30	15	20	525	400	58	140	✓	A 5,65 €
A-ZY8-30-20/SS	M8	30	20	20	204	400	40	140	✓	A 5,85 €
A-ZY8-30-25/SS	M8	30	25	20	-	-	-	-	✓	A 6,32 €
A-ZY8-30-30/SS	M8	30	30	20	108	400	25	140	✓	A 6,32 €
A-ZY8-30-40/SS	M8	30	40	20	-	-	-	-	✓	A 7,76 €
A-ZY8-40-25/SS	M8	40	25	23	-	-	-	-	✓	A 8,47 €
A-ZY8-40-30/SS	M8	40	30	23	213	650	43	250	✓	A 7,62 €
A-ZY10-40-25/SS	M10	40	25	28	-	-	-	-	✓	A 7,26 €
A-ZY10-40-30/SS	M10	40	30	28	-	-	-	-	✓	A 8,70 €
A-ZY10-50-20/SS	M10	50	20	28	857	1000	110	400	✓	A 10,45 €
A-ZY10-50-30/SS	M10	50	30	28	375	1000	66	400	✓	A 12,63 €
A-ZY10-50-40/SS	M10	50	40	28	260	1000	53	400	✓	A 15,40 €
A-ZY10-50-45/SS	M10	50	45	28	215	1000	43	400	✓	A 12,73 €
A-ZY10-50-50/SS	M10	50	50	28	-	-	-	-	✓	A 16,70 €
A-ZY10-60-40/SS	M10	60	40	28	-	-	-	-	✓	A 19,40 €
A-ZY10-70-45/SS	M10	70	45	28	-	-	-	-	✓	A 26,69 €
A-ZY12-60-40/SS	M12	60	40	33	-	-	-	-	✓	B 17,16 €
A-ZY12-75-25/SS	M12	75	25	37	2710	2300	211	850	✓	B 20,67 €
A-ZY12-75-40/SS	M12	75	40	37	734	2300	117	850	✓	B 22,75 €
A-ZY12-75-50/SS	M12	75	50	37	506	2300	91	850	✓	B 25,85 €
A-ZY12-75-55/SS	M12	75	55	37	417	2300	78	850	✓	B 27,38 €
A-ZY16-100-40/SS	M16	100	40	41	1970	4200	257	1600	-	B 48,53 €
A-ZY16-100-55/SS	M16	100	55	41	892	4200	145	1600	-	B 53,30 €
A-ZY16-100-75/SS	M16	100	75	41	-	-	-	-	-	B 61,25 €

*Depending on availability - Dimensions in mm

Our other products



T10_21_AL_
T type timing pulley,
Economy range - T10
aluminium



ADL_F
Female eye bolt
conforms to DIN582,
Steel



GE32
Sprung toggle latch
with connecting link,
Standard



SBF
Sealed flange bearing
unit for Food Industry,
cover



GAC
Latch clamp with lock,
Lockable



HW_HT
Half-rail guide, Wheel



SH1
Parallel axis helical
gear, Steel 20NCD2



PSEC
Security pull handle,
Thermoplastic



EPRC
High helix leadscrew,
Cylindrical nut - up to



PDD
Spring plunger, With
sensor adaptor



RPCtcss
Swivel castor with
central hole, Stainless



RBS
Dynamic washer
DIN2093, Steel

Complementary products



AZY
Cylindrical elasto
mount, Steel



BZY_SS
Stainless steel
cylindrical elasto
mount, Stainless steel



BZY
Cylindrical elasto
mount, Steel



PMB
Anti-vibration
machine mount, Oval
base plate