

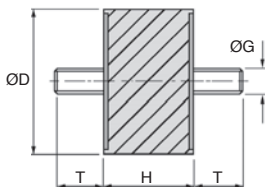
- Radial elasticity greater than axial elasticity.
- Cylinder worked under compression or shearing
- Materials:
 - Core: Steel plates
 - Cylinder: Rubber
- Hardness: NK 55-60 shore A
- Working temp: -40°C to +70°C

Uses

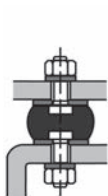
- Dampens sound and vibrations

Info.

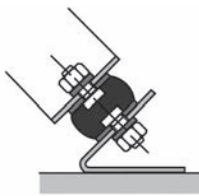
- Not sold individually, please contact us for details
- Values for loads and rigidity are given as a guide only



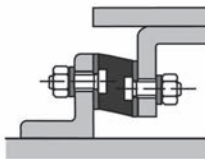
From size M3 upwards



Compression



Compression
Shearing



Shearing

DISCOUNTS **A**

Qty	1+	6+	20+	40+	100+
Disc.	List	-10%	-15%	-20%	On request

DISCOUNTS **B**

Qty	1+	6+	10+	15+	20+	50+
Disc.	List	-10%	-15%	-20%	-25%	On request

Part number	ØG	ØD	H	T	Compression		Shearing		Stock*	Price each 1 to 5
					stiffness (N/mm)	Max. load (N)	stiffness (N/mm)	Max. load (N)		
A-ZY3-8-8/SS	M3	8	8	6	-	-	-	-	✓	A 3,07 €
A-ZY4-10-10/SS	M4	10	10	10	44	43	9	15	✓	A 3,07 €
A-ZY4-15-7/SS	M4	15	7	10	174	95	29	35	✓	A 2,54 €
A-ZY4-15-8/SS	M4	15	8	10	160	95	27	35	✓	A 2,75 €
A-ZY4-15-10/SS	M4	15	10	10	124	95	24	35	✓	A 2,85 €
A-ZY4-15-15/SS	M4	15	15	12	61	95	13	35	✓	A 2,85 €
A-ZY4-15-20/SS	M4	15	20	13	-	-	-	-	✓	A 3,27 €
A-ZY5-15-15/SS	M5	15	15	8	61	95	24	35	✓	A 2,77 €
A-ZY6-20-8/SS	M6	20	8	18	307	170	36	60	✓	A 3,15 €
A-ZY6-20-10/SS	M6	20	10	18	-	-	-	-	✓	A 3,25 €
A-ZY6-20-15/SS	M6	20	15	18	130	170	24	60	✓	A 3,30 €
A-ZY6-20-20/SS	M6	20	20	18	-	-	-	-	✓	A 3,78 €
A-ZY6-20-25/SS	M6	20	25	18	85	170	17	60	✓	A 3,78 €
A-ZY6-25-10/SS	M6	25	10	18	750	280	74	95	✓	A 3,46 €
A-ZY6-25-15/SS	M6	25	15	18	-	-	-	-	✓	A 3,70 €
A-ZY6-25-20/SS	M6	25	20	18	-	-	-	-	✓	A 4,31 €
A-ZY6-25-25/SS	M6	25	25	18	-	-	-	-	✓	A 4,76 €
A-ZY8-30-15/SS	M8	30	15	20	525	400	58	140	✓	A 5,65 €
A-ZY8-30-20/SS	M8	30	20	20	204	400	40	140	✓	A 5,85 €
A-ZY8-30-25/SS	M8	30	25	20	-	-	-	-	✓	A 6,32 €
A-ZY8-30-30/SS	M8	30	30	20	108	400	25	140	✓	A 6,32 €
A-ZY8-30-40/SS	M8	30	40	20	-	-	-	-	✓	A 7,76 €
A-ZY8-40-25/SS	M8	40	25	23	-	-	-	-	✓	A 8,47 €
A-ZY8-40-30/SS	M8	40	30	23	213	650	43	250	✓	A 7,62 €
A-ZY10-40-25/SS	M10	40	25	28	-	-	-	-	✓	A 7,26 €
A-ZY10-40-30/SS	M10	40	30	28	-	-	-	-	✓	A 8,70 €
A-ZY10-50-20/SS	M10	50	20	28	857	1000	110	400	✓	A 10,45 €
A-ZY10-50-30/SS	M10	50	30	28	375	1000	66	400	✓	A 12,63 €
A-ZY10-50-40/SS	M10	50	40	28	260	1000	53	400	✓	A 15,40 €
A-ZY10-50-45/SS	M10	50	45	28	215	1000	43	400	✓	A 12,73 €
A-ZY10-50-50/SS	M10	50	50	28	-	-	-	-	✓	A 16,70 €
A-ZY10-60-40/SS	M10	60	40	28	-	-	-	-	✓	A 19,40 €
A-ZY10-70-45/SS	M10	70	45	28	-	-	-	-	✓	A 26,69 €
A-ZY12-60-40/SS	M12	60	40	33	-	-	-	-	✓	B 17,16 €
A-ZY12-75-25/SS	M12	75	25	37	2710	2300	211	850	✓	B 20,67 €
A-ZY12-75-40/SS	M12	75	40	37	734	2300	117	850	✓	B 22,75 €
A-ZY12-75-50/SS	M12	75	50	37	506	2300	91	850	✓	B 25,85 €
A-ZY12-75-55/SS	M12	75	55	37	417	2300	78	850	✓	B 27,38 €
A-ZY16-100-40/SS	M16	100	40	41	1970	4200	257	1600	-	B 48,53 €
A-ZY16-100-55/SS	M16	100	55	41	892	4200	145	1600	-	B 53,30 €
A-ZY16-100-75/SS	M16	100	75	41	-	-	-	-	-	B 61,25 €

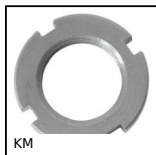
*Depending on availability - Dimensions in mm

Our other products



ACLBDB

Closing mechanism for aluminium profile, Dual ball catch



KM

Bearing locknut, Locknut KM



CLAT

Clamping lever Hygienic Usit® - male, Stainless steel



PCLA_T

Technopolymer clamping lever - male, Plastic



PTR

Idler chain sprocket, For standard applications



PSG125

Spur gear - precision range, Case hardened steel 20NCD2



WSRM

Cylindrical polymer nut, Polymer (Iglidur®) - 1 thread



BPFL

Sheet steel flanged bearing for light loads, Sheet steel



EBC

Cap nut Hygienic Design®, Compact



BLOC

Doorstop, Doorstop



SCR

Suction cup threaded insert, Adaptor for insert



TBEBASE10

Economic mini-table with trapezoidal leadscrew, 1kg

Complementary products



AZY

Cylindrical elasto mount, Steel



BZY_SS

Stainless steel cylindrical elasto mount, Stainless steel



BZY

Cylindrical elasto mount, Steel



PMB

Anti-vibration machine mount, Oval base plate