

- Radial elasticity greater than axial elasticity
- Cylinder worked under compression or shearing
- Materials
 - core: Steel plates
 - cylinder: Rubber
- Hardness: NK 55-60 shore A
- Working temp: -40°C to +70°C

Uses

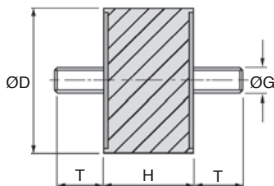
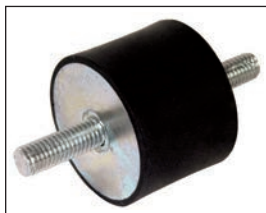
- Dampens sound and vibrations

Options

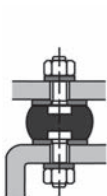
- Stainless steel version available on request

Info.

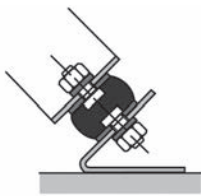
- Not sold individually, please contact us for details
- Values for loads and rigidity are given as a guide only



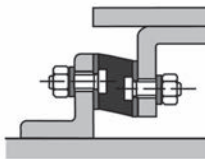
From size M3
upwards



Compression



Compression
Shearing



Shearing

DISCOUNTS **A**

Qty	1+	6+	20+	40+	100+	200+
Disc.	List	-10%	-15%	-20%	-25%	On request

DISCOUNTS **B**

Qty	1+	6+	10+	15+	20+	50+
Disc.	List	-10%	-15%	-20%	-25%	On request

Part number	ØG	ØD	H	T	Compression		Shearing		Stock*	Price each 1 to 5
					stiffness (N/mm)	Max. load(N)	stiffness (N/mm)	Max. load(N)		
A-ZY3-8-8	M3	8	8	6	-	-	-	-	✓	A 2,00 €
A-ZY4-10-10	M4	10	10	10	44	43	9	15	✓	A 1,85 €
A-ZY4-15-7	M4	15	7	10	174	95	29	35	✓	A 1,68 €
A-ZY4-15-8	M4	15	8	10	160	95	27	35	✓	A 1,68 €
A-ZY4-15-10	M4	15	10	10	124	95	24	35	✓	A 1,85 €
A-ZY4-15-15	M4	15	15	12	61	95	13	35	✓	A 1,97 €
A-ZY4-15-20	M4	15	20	13	-	-	-	-	✓	A 2,20 €
A-ZY5-15-15	M5	15	15	8	61	95	24	35	✓	A 1,97 €
A-ZY6-20-8	M6	20	8	18	307	170	36	60	✓	A 2,20 €
A-ZY6-20-10	M6	20	10	18	-	-	-	-	✓	A 2,29 €
A-ZY6-20-15	M6	20	15	18	130	170	24	60	✓	A 2,29 €
A-ZY6-20-20	M6	20	20	18	-	-	-	-	✓	A 2,29 €
A-ZY6-20-25	M6	20	25	18	85	170	17	60	✓	A 2,47 €
A-ZY6-25-10	M6	25	10	18	750	280	74	95	✓	A 2,47 €
A-ZY6-25-15	M6	25	15	18	-	-	-	-	✓	A 2,64 €
A-ZY6-25-20	M6	25	20	18	-	-	-	-	✓	A 3,00 €
A-ZY6-25-25	M6	25	25	18	-	-	-	-	✓	A 3,17 €
A-ZY8-30-15	M8	30	15	20	525	400	58	140	✓	A 3,61 €
A-ZY8-30-20	M8	30	20	20	204	400	40	140	✓	A 3,78 €
A-ZY8-30-25	M8	30	25	20	-	-	-	-	✓	A 4,21 €
A-ZY8-30-30	M8	30	30	20	108	400	25	140	✓	A 4,22 €
A-ZY8-30-40	M8	30	40	20	-	-	-	-	✓	A 5,12 €
A-ZY8-40-25	M8	40	25	23	-	-	-	-	✓	A 5,20 €
A-ZY8-40-30	M8	40	30	23	213	650	43	250	✓	A 5,36 €
A-ZY10-40-25	M10	40	25	28	-	-	-	-	✓	A 5,20 €
A-ZY10-40-30	M10	40	30	28	-	-	-	-	✓	A 6,33 €
A-ZY10-50-20	M10	50	20	28	857	1000	110	400	✓	A 7,49 €
A-ZY10-50-30	M10	50	30	28	375	1000	66	400	✓	A 8,53 €
A-ZY10-50-40	M10	50	40	28	260	1000	53	400	✓	A 8,72 €
A-ZY10-50-45	M10	50	45	28	215	1000	43	400	-	A 8,90 €
A-ZY10-50-50	M10	50	50	28	-	-	-	-	✓	A 9,49 €
A-ZY10-60-40	M10	60	40	28	-	-	-	-	✓	A 12,83 €
A-ZY10-70-45	M10	70	45	28	-	-	-	-	✓	A 19,26 €
A-ZY12-60-40	M12	60	40	33	-	-	-	-	✓	B 8,50 €
A-ZY12-75-25	M12	75	25	37	2710	2300	211	850	✓	B 10,00 €
A-ZY12-75-40	M12	75	40	37	734	2300	117	850	✓	B 11,03 €
A-ZY12-75-50	M12	75	50	37	506	2300	91	850	✓	B 12,86 €
A-ZY12-75-55	M12	75	55	37	417	2300	78	850	✓	B 13,39 €
A-ZY16-100-40	M16	100	40	41	1970	4200	257	1600	-	B 20,07 €
A-ZY16-100-55	M16	100	55	41	892	4200	145	1600	-	B 22,35 €
A-ZY16-100-75	M16	100	75	41	-	-	-	-	-	B 30,16 €

*Depending on availability - Dimensions in mm

Our other products



BOX-TOR-G

Box set of Nitrile O-rings in nitrile, 3.00 x 1.50mm to 30.20 x 3.00



MSP23

Masterplate® glueable insert Ø23, Cylindrical Ø23 with tapped ins...



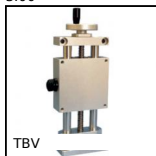
PTA80

Articulated levelling foot, pressed base Ø80, Ø 80



FHCSS

Countersunk screw, Stainless steel A2 - DIN 7991



TBV

Manual lifting tables, 7kg



BEAB

Knob star grip antibacterial, Star, anti-bacterial



BPM-Z

Plastic slotted spring plunger with ball tip, Plastic body + stainle...



GCB880

Curved track for slat top chain, Ranges 880 and 881



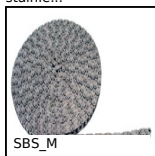
CHAL3

Piano hinge, Steel



STU

Stroke rotary bushing, Steel



SBS_M

Single chain supplied by the metre, Stainless steel



CHA138

Screwed hinge with threaded insert, 138 degrees

Complementary products



AZY_SS

Stainless steel cylindrical elasto mount, Stainless steel



BZY

Cylindrical elasto mount, Steel



ATZY

Diabolo shaped elasto mount, Steel



PMB

Anti-vibration machine mount, Oval base plate