



**AKD GERWAH**

**Coupling for servo-motors**

**Torque: 22 to 600Nm**

- Backlash and maintenance free
- Materials:  
Hub: aluminium  
bellows: stainless steel
- High torsional stiffness
- Low moment of inertia
- Shaft/bore link without backlash
- Recommended assembly tolerances H7/g6
- Working temperature: -30°C to +100°C
- **Please specify bore size on order (between min and max  $\varnothing$ )**

clamp hub



## Options

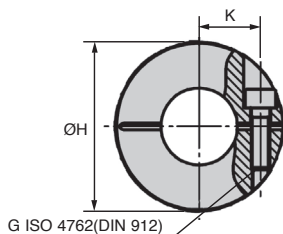
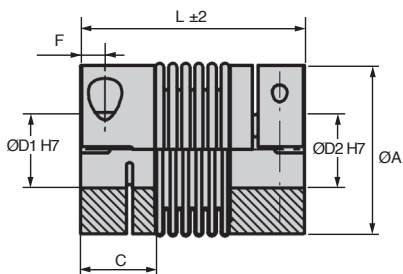
- Keyway acc DIN6885 available on request (tolerance JS9)

Part number	radial (mm)	Misalignment		Max. speed (rpm)	Weight (approx) (ca.kg)
		axial (mm)	angular		
AKD18	0,2	0,5	1,5°	12700	0,14
AKD30	0,2	0,5	1,5°	10200	0,26
AKD60	0,2	0,5	1,5°	8600	0,43
AKD80	0,2	0,5	1,5°	6800	0,79
AKD150	0,2	0,5	1,5°	6800	0,79
AKD200	0,2	0,5	1,5°	6300	1,12
AKD300	0,2	0,5	1,5°	5900	1,50
AKD500	0,2	1,0	1,5°	4900	2,04

Part number	Nominal torque (Nm)	Torsional stiffness (10sNm/rad)	Radial stiffness (N/mm)	Axial stiffness (N/mm)	Moment of inertia (10 <sup>-3</sup> kgm <sup>2</sup> )	Tightening torque (Nm)
AKD18	22	6	85	40	0,06	6
AKD30	36	25	220	30	0,10	12
AKD60	75	50	330	55	0,30	30
AKD80	95	75	400	55	0,90	60
AKD150	180	100	600	85	0,90	85
AKD200	240	120	450	85	1,50	100
AKD300	360	280	1500	150	3,20	120
AKD500	600	310	1000	85	4,90	190

Dimensions in mm

High  
Precision



### DISCOUNTS

Qty	1+	2+	4+
Disc.	List	-6%	On request

Part number	Bore ØD1/D2 (H7)	C	L	ØA	F	G	K	H	Price each
AKD18	8-26	20	71	45	6	M5	18	47	214,64 €
AKD30	10-30	25	73	55	8	M6	20	56	267,11 €
AKD60	12-35	29	89	64	10	M8	24	67	301,52 €
AKD80	14-42	34	103	80	12	M10	28	84	341,92 €
AKD150	14-42	34	103	80	12	M10	28	84	408,84 €
AKD200	22-46	38	113	90	13	M12	31	93	493,80 €
AKD300	24-60	38	115	110	13	M12	39	110	540,24 €
AKD500	35-64	41	122	119	15	M14	43	122	692,13 €

Dimensions in mm

## Our other products



SLVVlok

Vertical toggle clamp,  
Vertical toggle clamp /  
vertical foot



SUP

Self-centering  
clamping hub steel,  
Without locknut



BOXbeta

Box of assorted hitch  
pins, Boxed set - hitch



BPLF

Ball transfer unit light  
duty, Light



PSG08

Spur gear - precision  
range, Pre-hardened  
Steel 35NCD6



INS150

Self tapping insert  
with collar-coarse  
thread, With collar-  
coarse t...



CHALss

Piano hinge, Stainless  
steel



PLM-C

Flat gripping magnet,  
Flat holding magnet



CNA-CNG

Right angled  
mounting plate, Right



BZY\_SS

Stainless steel  
cylindrical elasto



MDPOT

Potentiometer,



T5\_11

T type timing pulley,  
T5 aluminium

## Complementary products



AKN

Bellows coupling  
Gerwah®, from 22 to  
180Nm



AK

Bellows coupling  
Gerwah®, from 36 to  
800Nm