



AKD GERWAH

Coupling for servo-motors

Torque: 22 to 600Nm

- Backlash and maintenance free
- Materials:
 - Hub: aluminium
 - bellows: stainless steel
- High torsional stiffness
- Low moment of inertia
- Shaft/bore link without backlash
- Recommended assembly tolerances H7/g6
- Working temperature: -30°C to +100°C
- **Please specify bore size on order (between min and max \varnothing)**

clamp hub



Options

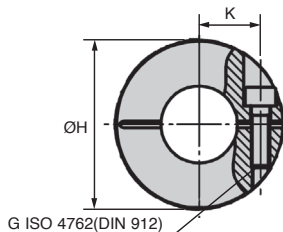
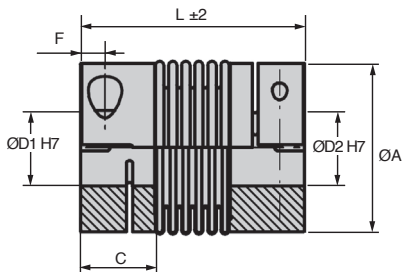
- Keyway according to DIN6885 on request (tolerance JS9)
- Orientation of the keyways at 180° to each other
- Stainless steel version on request

Part number	radial (mm)	Misalignment		Max. speed (rpm)	Weight (approx) (ca.kg)
		axial (mm)	angular		
AKD18	0,2	0,5	1,5°	12700	0,14
AKD30	0,2	0,5	1,5°	10200	0,26
AKD60	0,2	0,5	1,5°	8600	0,43
AKD80	0,2	0,5	1,5°	6800	0,79
AKD150	0,2	0,5	1,5°	6800	0,79
AKD200	0,2	0,5	1,5°	6300	1,12
AKD300	0,2	0,5	1,5°	5900	1,50
AKD500	0,2	1,0	1,5°	4900	2,04

Part number	Nominal torque (Nm)	Torsional stiffness (10sNm/rad)	Radial stiffness (N/mm)	Axial stiffness (N/mm)	Moment of inertia (10 ⁻³ kgm ²)	Tightening torque (Nm)
AKD18	22	6	85	40	0,06	6
AKD30	36	25	220	30	0,10	12
AKD60	75	50	330	55	0,30	30
AKD80	95	75	400	55	0,90	60
AKD150	180	100	600	85	0,90	85
AKD200	240	120	450	85	1,50	100
AKD300	360	280	1500	150	3,20	120
AKD500	600	310	1000	85	4,90	190

Dimensions in mm

High
Precision



DISCOUNTS

Qty	1+	2+	4+
Disc.	List	-6%	On request

Part number	Bore ØD1/D2 (H7)	C	L	øA	F	G	K	H	Price each
AKD18	8-26	20	71	45	6	M5	18	47	214,64 €
AKD30	10-30	25	73	55	8	M6	20	56	267,11 €
AKD60	12-35	29	89	64	10	M8	24	67	301,52 €
AKD80	14-42	34	103	80	12	M10	28	84	341,92 €
AKD150	14-42	34	103	80	12	M10	28	84	408,84 €
AKD200	22-46	38	113	90	13	M12	31	93	493,80 €
AKD300	24-60	38	115	110	13	M12	39	110	540,24 €
AKD500	35-64	41	122	119	15	M14	43	122	692,13 €

Dimensions in mm

Our other products



BCM_MPBT

Modular cylindrical brush, PBT polyester bristles



DBL880

Idler for slat top chain, Ranges 880 and 881



PM2

Worm and wheel set, Bronze



B3PAN

Panamech, Multi-Beam stainless steel, Stainless steel - with clampin...



CHAuss

Screwed hinge, 270°



MFB_MHB

Moulded plastic bevel gear (nylon), 4:1



PR820

Idle sprocket for slat top chain, Rangs 820 and 815



D-PAR_SS

Stainless steel elastomeric mount, stainless steel



AT10-BAR

AT type tooth bar stock, AT10



HTD14M_85

HTD Heavy duty timing pulley, HTD14



GP75

Spring loaded toggle latch, Standard



PW_PWG1

Worm - precision range, Steel

Complementary products



AKN

Bellows coupling Gerwah®, from 22 to 180Nm



AK

Bellows coupling Gerwah®, from 36 to 800Nm