

Fastening pin with ring

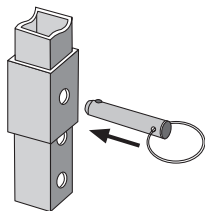
AFA

Steel

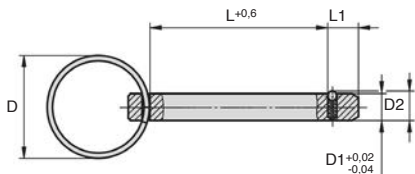
- **Ball pin**
- Quick and easy assembly of workpieces and other elements
- Double shear force (F) = S x τ_{AB} max
- Materials:
 - Body - Chromed steel
 - Ring - Stainless steel

Advantages

- These fastening pins with rings are an economic alternative to interlocking safety fasteners.
- They are easier to use and cheaper than a BAB ball pin but offer a lower level of safety



Typical application



DISCOUNTS

Qty	1+	6+	10+	25+
Disc.	List	-5%	-10%	On request

Part number	ØD	ØD1	ØD2	L	L1	Double shear strength (kN)	Stock*	Price each
								1 to 5
AFA6-15	23	6	6,5	15	7	22	✓	6,40 €
AFA6-20	23	6	6,5	20	7	22	-	6,53 €
AFA6-30	23	6	6,5	30	7	22	✓	6,69 €
AFA6-40	23	6	6,5	40	7	22	✓	6,87 €
AFA8-30	28	8	8,8	30	8	28	✓	6,69 €
AFA8-40	28	8	8,8	40	8	28	✓	6,87 €
AFA8-50	28	8	8,8	50	8	28	✓	7,10 €

Dimensions in mm

Our other products



MHXred

Reducing sleeve
male/female,
Hexagonal - steel



CHAB

Hinge with stop,
Hinge



PAM_SS

Stainless steel
articulated levelling
foot, Ø 30 & 40



BPL

Ball transfer unit light
duty, Light



RDE-N

Sealing washer
Hygienic Usit®,
Stainless steel - Black
EPDM



PRF_PA

Angle plate for
aluminium profile,
Adjustable plate



PPJ

Indexing plunger with
flange, With
horizontal mounting
flange and pu...



BPHFclip

Clip for ball transfer
unit, Insert clip -
Installing from above



NCT

Square tube
connector, Fixed



BOXbeta

Box of assorted hitch
pins, Boxed set - hitch



PP35

Worm and wheel gear
reducer, from 2.20 to



PF55

Worm and wheel gear
reducer, up to 57 Nm

Complementary products



AFSE

Locking pin with
interlocking safety
latch, with
interlocking safety...



GCA

Linch pin, Linch



GCT

Pipe linch pin, Tube
linch pin



BAB

Hardened Stainless
steel ball pin,
Stainless steel
hardened