

# Fastening pin with ring

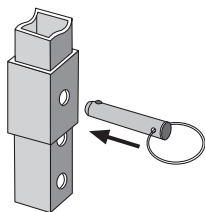
## AFA

## Steel

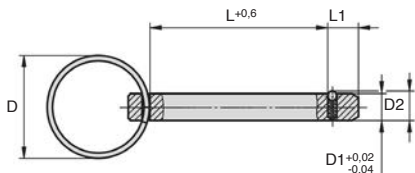
- **Ball pin**
- Quick and easy assembly of workpieces and other elements
- Double shear force (F) = S x τ<sub>AB</sub> max
- Materials:  
 Body - Chromed steel  
 Ring - Stainless steel

### Advantages

- These fastening pins with rings are an economic alternative to interlocking safety fasteners.
- They are easier to use and cheaper than a BAB ball pin but offer a lower level of safety



Typical application



### DISCOUNTS

Qty	1+	6+	10+	25+
Disc.	List	-5%	-10%	On request

Part number	ØD	ØD1	ØD2	L	L1	Double shear strength (kN)	Stock*	Price each
								1 to 5
AFA6-15	23	6	6,5	15	7	22	✓	6,40 €
AFA6-20	23	6	6,5	20	7	22	-	6,53 €
AFA6-30	23	6	6,5	30	7	22	✓	6,69 €
AFA6-40	23	6	6,5	40	7	22	✓	6,87 €
AFA8-30	28	8	8,8	30	8	28	✓	6,69 €
AFA8-40	28	8	8,8	40	8	28	✓	6,87 €
AFA8-50	28	8	8,8	50	8	28	✓	7,10 €

Dimensions in mm

## Our other products



Tool holder for aluminium profile, Moveable tool holder



Manual workbench press, Force up to 200kg



Anti-vibration machine mount, Square base plate



Parallel axis helical gear, Machined plastic (delrin)



Brush strip, Cone-shaped - brush



Slotted spring plunger with ball tip, Stainless steel 303



Idler sprocket for slat top chain, Range 881



Single housed bearing assembly, Bearing secured with circlips



3 lobed handle, Polyamide - Brass



T type timing belt, T2.5 Steel cored polyurethane



Precision locknut, Precision locknut



Self-compensating shock-absorber, Self-compensating - without adjust...

## Complementary products



Locking pin with interlocking safety latch, with interlocking safety...



Linch pin, Linch



Pipe linch pin, Tube linch pin



Hardened Stainless steel ball pin, Stainless steel hardened