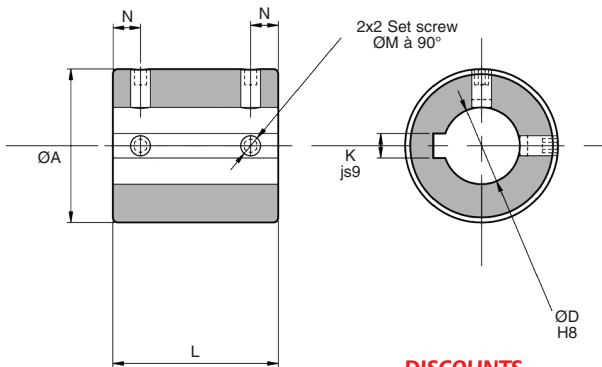
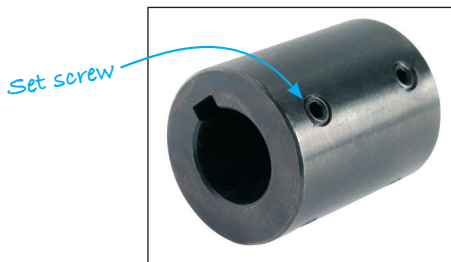


Rigid coupling with keyway

AF

Set screw fixing

- With keyway
- Material:
Steel



DISCOUNTS

Qty	1+	6+	20+	40+
Disc.	List	-15%	-20%	On request

Part number	ØD	Keyway K	ØA	L	Set screw ØM	N	Stock*	Price each 1 à 5
AF10	10	3	20	30	M4	6	✓	86,14 €
AF12	12	4	28	36	M5	7	✓	86,14 €
AF15	15	5	28	36	M5	8	✓	86,14 €
AF20	20	6	32	40	M6	10	✓	108,83 €
AF25	25	8	40	54	M8	12	✓	126,61 €
AF30	30	8	50	54	M8	12	✓	139,26 €

*Depending on availability - Dimensions in mm

HPC

WEB
04/2021

www.hpceurope.com

Tél: 0 825 88 5000 Service 0,15 €/min + prix appel

Our other products



PRF_BP
Doorstop for aluminium profile, Swing door stop



HTD8M_20
HTD Heavy duty timing pulley, HTD8 Steel



CHTRP
Single and dual output gearboxes, Up to 87,3 Nm



UCF_PBT
Stainless steel/Polymer flanged bearing, Polymer and stainless steel



CFES
Eccentric cam follower, Eccentric



SLB
Indexing plunger, stainless steel



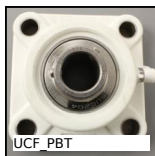
UCF_SS
Stainless steel flanged bearing, Stainless steel



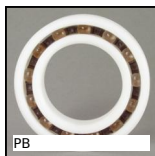
CHAC4040NP
Square hinge with riveted pin, not drilled, Square with riveted pin,...



CHAR
Spring hinge, screwed



UCF_PBT
Stainless steel/Polymer flanged



PB
Plastic deep groove ball bearing, Plastic -



SH4
Parallel axis helical gear, Steel 20NCD2

Complementary products



SC2
2 part rigid shaft clamp, Clamping jaw