

Wheel for aluminium profiles



ACLRP

Guide wheel

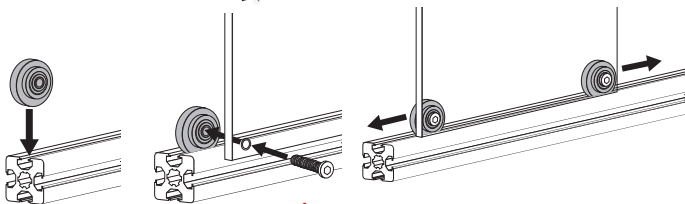
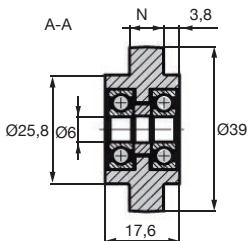
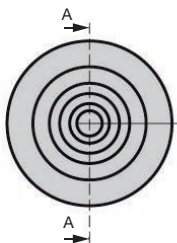
- Guide wheel for use in the slots of aluminium profiles
- Integrated bearing
- Material:
Black glass fibre reinforced nylon
Colour : RAL7032 (pebble gray)

Advantages

- Suitable for use with PRF aluminium profiles

Info

- No mounting screws supplied



INCREASED STOCK

DISCOUNTS

Qty	1+	50+	100+
Disc. List		-5%	On request

Part number	N	Weight (g)	Stock*	Price each 1 to 49
ACLRP-39	8	30	✓	10,30 €

* Depending on availability - Dimensions in mm

Our other products



UGPL

Actuator guide kit,
Long bearing



GE1006

Elastic ringed latch,
Hooks into a slot



RCC_RCX

Spherical tilt washer -
DIN6319, convex



CLB_M

Die cast zinc clamping
lever - female, Zamak



GCL

Linear ball slide -
Stainless steel balls,
Chariot - from 516 N
to 8...



SBF

Sealed flange bearing
unit for Food Industry,
cover



EHD08-9

Internal epicyclic
servo reducers, from
35 to 50 Nm



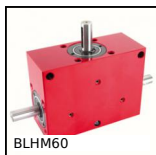
AC

Strike for toggle latch,
15mm



COA-COG

Surface mounting
plate, Surface
mounting plate for



BLHM60

Right angled gearbox,
double output shafts,
up to 70 Nm



GLT3E-58

Telescopic drawer,



AT5M AT10M

AT type timing belt
per metre, AT5 Steel
cored polyurethane

Complementary products



PRF4545

Standard aluminium
profile, 45 x 45 mm