

Right angled bracket for aluminium profiles

ACLEPP

Connecting bracket for connecting 2 profiles

- To join 2 profiles at 90°
- Material
Anodised aluminium
For use with single slot profiles

Advantages

- Suitable for use with PRF aluminium profiles

Info

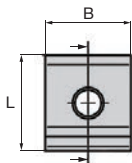
- No mounting screws supplied



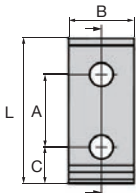
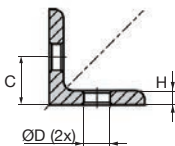
ACL-EPP2-4545



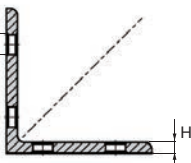
ACL-EPP4-4590



ACL-EPP2- 4545



ACL-EPP4-4590



 **INCREASED STOCK**

DISCOUNTS

Qty	1+	50+	100+
Disc.	List	-5%	On request

Part number	Version	L	B	H	A	C	ØD	Weight (g)	Stock*	Price each 1 to 49
ACL-EPP2-4545	2 trous	45	41	6	-	22,5	9	55	✓	2,84 €
ACL-EPP4-4590	4 trous	90	41	6	45	22,5	9	112	✓	5,66 €

*Depending on availability - Dimensions in mm

Right angled bracket for aluminium profiles

Connecting bracket for connecting 2 profiles

ACLEPP

- To join 2 profiles at 90°
- Material
Anodised aluminium
For use with dual slot profilest

Advantages

- Suitable for use with PRF4590 aluminium profiles

Info

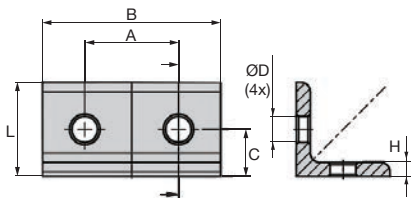
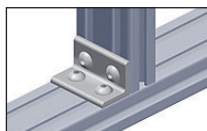
- No mounting screws supplied



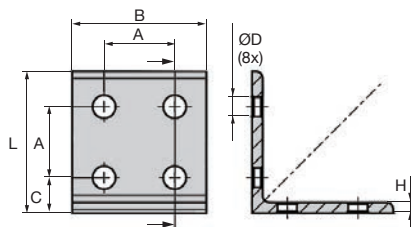
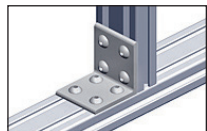
ACL-EPP4-9045



ACL-EPP8-9090



ACL-EPP4-9045



ACL-EPP8-9090

 **INCREASED STOCK**

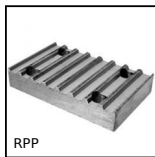
DISCOUNTS

Qty	1+	50+	100+
Disc.	List	-5%	On request

Part number	Version	L	B	H	A	C	ØD	Weight (g)	Stock*	Price each 1 to 49
ACL-EPP4-9045	4 trous	45	86	6	45	22,5	9	112	✓	5,85 €
ACL-EPP8-9090	8 trous	90	86	6	45	22,5	9	235	✓	10,50 €

*Depending on availability - Dimensions in mm

Our other products



RRP

Connecting plate for RPP type timing belts, RRP5



AT5M AT10M

AT type timing belt per metre, AT10 Steel cored polyurethane



PENV

Recessed handle, screw fixing



PPRss

Pad eye on mounting plate round, Stainless steel



PSG08S

Spur gear - precision range, Stainless steel 316



PFM

Fixed levelling foot, Flanged plate



RHTplss

High Temperature Castor, up to 200kg



ACL-FPA

Panel mounting block for aluminium structures, Angular connector



Q4

Double row radial contact ball bearing, Radial contact - Steel



PAM_SS

Stainless steel articulated levelling foot, Ø 30 & 40



PTR

Idler chain sprocket, For standard applications



PSG1

Spur gear - precision range, Pre-hardened Steel 35NCD6

Complementary products



PRF4545

Standard aluminium profile, 45 x 45 mm