

Hinge for aluminium profile

ACL-CHARJ

Adjusts in 2 directions

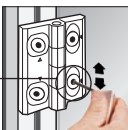
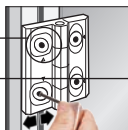
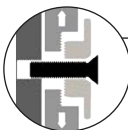
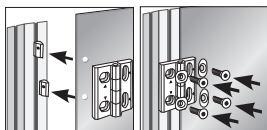
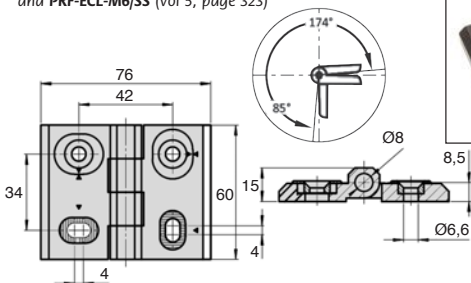
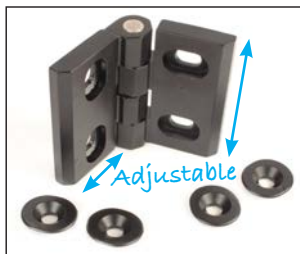
- Hinge that can be adjusted in 2 directions
- Allows precise positioning, both horizontally and vertically
- Materials:
Plates – Moulded zinc
Pin- stainless steel

Advantages

- This hinge can be adjusted in both the X and Y planes thanks to use of serrated oblong holes and serrated washers

Use

- Use M6 FHC screws (not supplied)
See **FHC6-16/SS** (Vol 1, page 427)
and **PRF-ECL-M6/SS** (Vol 5, page 323)



DISCOUNTS

Qty	1+	50+	100+
Disc	Net	+5%	On request

Part N°	Load FA max (N)	Load FR max (N)	Weight (g)	Stock*	Price each 1 to 49
Ajustable dans 2 directions					
ACL-CHARJ60-76	1200	2200	190	-	26,92 €

Our other products



Worm and wheel gear reducer, up to 40 Nm



Clevis components, short version, Stainless steel - short range



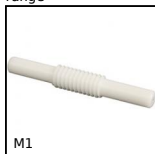
Eccentric cam follower, Eccentric



Closing system for aluminium profile, Spacer for spherical ended stop



Worm and wheel gear reducer, up to 28 Nm



Worm and wheel set, Machined plastic (delrin)



Weld-on hinge with flat end, Stainless steel or Aluminium



Speed controller 5A accessories, Kit of 4 cables for DC motor



Worm and wheel gear reducer, up to 980 Nm



Cylindrical holding magnets, Cylindrical holding magnet



Worm and wheel set, Non hardened steel



Manual workbench press, Force up to 400kg

Complementary products



Countersunk screw, Stainless steel A2 - DIN 7991



Nut for aluminium profile, Stainless steel square nut with tab



Standard aluminium profile, 45 x 45 mm