

# Magnetic stop for aluminium profiles

Shuts using magnetism

ACLAPA

- Rapid closing mechanism for doors
- Material

Black glass fibre reinforced nylon  
Retaining force : 30-50N approx

## Advantages

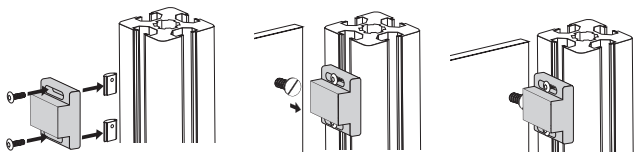
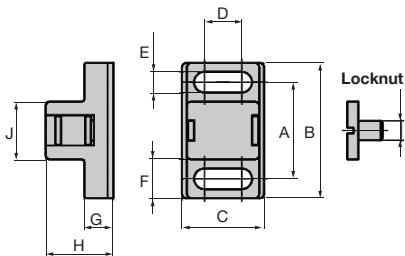
- Suitable for PRF aluminium profiles

## Info

- No mounting screws supplied (see PRF-ECL-M6 and BHC6)
- Not sold individually, contact us for details



Typical application



**INCREASED STOCK**

## DISCOUNTS

Qty	1+	50+	100+
Disc.	List	-5%	On request

Part number	DIN921 locknut	A	B	C	D	E	F	G	H	J	Weight (g)	Stock*	Price each 1 to 49
ACL-APA-20	M4x5	20	28	17	7,7	4,3	8	6	14	12	9	✓	3,83 €
ACL-APA-30	M5x6	30	40	28	13,5	6,3	10,5	10	20	18,4	39	✓	5,09 €

\* Depending on availability - Dimensions in mm

## Our other products



PF55  
Worm and wheel gear reducer, up to 57 Nm



MHXred  
Reducing sleeve male/female, Hexagonal - stainless steel



GPB  
Threaded spherical knob, Moulded thread



CLM  
Male clevis end, Stainless steel short



HTD5M\_25  
HTD Heavy duty timing pulley, HTD5 Steel



RDCss  
Rigging screw with 2 jaws stainless steel, Stainless steel



PLM-C  
Flat gripping magnet, Flat holding magnet



CHA\_GC\_9SS  
Stainless steel garnet hinge, To be welded



SVT\_CH  
Screwjack - pivot mounting, Pivoting



RBNpl  
Swivel castor with plate, Steel - rubber



PRF\_GAL  
Roller for aluminium profile, Hollow roller



SH1  
Parallel axis helical gear, Steel 20NCD2

## Complementary products



PRF4545  
Standard aluminium profile, 45 x 45 mm



PRF\_ECL  
Nut for aluminium profile, Steel square nut with tab



ACL-APB  
Closing system for aluminium profile, Magnetic door stop