

- Suitable for transmitting high torque values

- Materials:

Steel C40/XC42

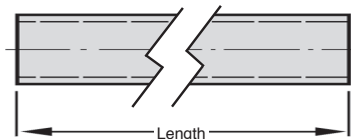
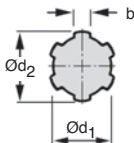
- Extruded product

Accessories

- Splined bush: cylindrical or flanged

Options

- Alternative lengths up to 3000mm



DISCOUNTS and AVAILABLE LENGTHS

Qty	1+	10+	20+	30+	40+
disc	List	-15%	-20%	-30%	On request
L.	1000 mm		2000 mm		3000 mm
Price	Uni.		x 2,23		x 3,35

Part number	Number of splines	Ød ₁	Ød ₂	b	Standard length (mm)	Weight (kg)	Stock*	Price each 1 to 9
ACA6-14-1000	6	11 ^{+0,08} / _{-0,08}	14 ^{-0,07} / _{-0,2}	3,0 ^{+0,08} / _{-0,08}	1000	0,949	✓	28,84 €
ACA6-16-1000	6	13 ^{+0,08} / _{-0,08}	16 ^{-0,07} / _{-0,2}	3,5 ^{+0,08} / _{-0,08}	1000	1,287	✓	27,62 €
ACA6-20-1000	6	16 ^{+0,08} / _{-0,08}	20 ^{-0,07} / _{-0,25}	4,0 ^{+0,08} / _{-0,08}	1000	1,911	✓	37,05 €
ACA6-22-1000	6	18 ^{+0,08} / _{-0,08}	22 ⁺⁰ / _{-0,10}	5,0 ^{+0,08} / _{-0,08}	1000	2,453	✓	41,99 €
ACA6-25-1000	6	21 ^{+0,08} / _{-0,08}	25 ^{-0,07} / _{-0,27}	5,0 ^{+0,08} / _{-0,08}	1000	3,139	✓	48,01 €
ACA6-28-1000	6	23 ^{+0,08} / _{-0,08}	28 ^{-0,07} / _{-0,25}	6,0 ^{+0,08} / _{-0,08}	1000	3,964	✓	64,54 €
ACA6-32-1000	6	26 ^{+0,08} / _{-0,08}	32 ^{-0,07} / _{-0,27}	6,0 ^{+0,08} / _{-0,08}	1000	5,008	✓	79,05 €
ACA6-34-1000	6	28 ^{+0,08} / _{-0,08}	34 ^{-0,07} / _{-0,27}	7,0 ^{+0,08} / _{-0,08}	1000	5,816	✓	93,28 €
ACA8-38-1000	8	32 ^{+0,08} / _{-0,08}	38 ^{-0,07} / _{-0,27}	6,0 ^{+0,08} / _{-0,08}	1000	7,433	✓	115,68 €
ACA8-42-1000	8	36 ^{+0,08} / _{-0,08}	42 ^{-0,07} / _{-0,27}	7,0 ^{+0,08} / _{-0,08}	1000	9,302	✓	150,14 €
ACA8-48-1000	8	42 ^{+0,08} / _{-0,08}	48 ^{-0,07} / _{-0,27}	8,0 ^{+0,08} / _{-0,08}	1000	12,371	✓	190,46 €
ACA8-54-1000	8	46 ^{+0,08} / _{-0,08}	54 ^{-0,07} / _{-0,27}	9,0 ^{+0,08} / _{-0,08}	1000	15,300	✓	277,15 €

*Depending on availability - Dimensions in mm

Our other products



AT10courroie

AT type timing belt,
AT10 Steel cored
polyurethane



HK

Manual locking clamp,
Manual locking clamp
LWL



RUR

Wheel, Polyurethane -
Aluminium rim (Free
running)



MEF

Cylindrical sintered
ferrous bush, Self-
lubricating FP20
ferrous all...



BGC

Oldham coupling,
Clamp



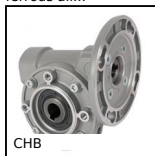
BSCf

Knurled torque knobs
- female, Knurled
threaded torque



HTD3M_09

HTD Heavy duty
timing pulley, HTD3
Aluminium



CHB

Worm and wheel gear
reducer, up to 73 Nm



PRF_ER

Joining bar for
aluminium profile,



CHAsb63

Hinge without pin,
Polymer pin hinge



PF55

Worm and wheel gear
reducer, up to 57 Nm



AC156-157

Strike for toggle latch,
25.5mm

Complementary products



BCA

Steel splined collar,
Steel



ACAss

Stainless steel splined
shaft, Stainless steel