

- Suitable for transmitting high torque values

- Materials:

Steel C40/XC42

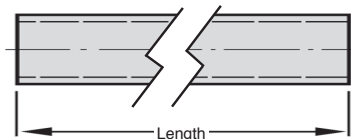
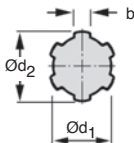
- Extruded product

Accessories

- Splined bush: cylindrical or flanged

Options

- Alternative lengths up to 3000mm



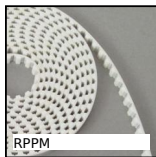
DISCOUNTS and AVAILABLE LENGTHS

Qty	1+	10+	20+	30+	40+
disc	List	-15%	-20%	-30%	On request
L.	1000 mm		2000 mm		3000 mm
Price	Uni.		x 2,23		x 3,35

Part number	Number of splines	Ød ₁	Ød ₂	b	Standard length (mm)	Weight (kg)	Stock*	Price each 1 to 9
ACA6-14-1000	6	11 ^{+0,08} / _{-0,08}	14 ^{-0,07} / _{-0,2}	3,0 ^{+0,08} / _{-0,08}	1000	0,949	✓	28,84 €
ACA6-16-1000	6	13 ^{+0,08} / _{-0,08}	16 ^{-0,07} / _{-0,2}	3,5 ^{+0,08} / _{-0,08}	1000	1,287	✓	27,62 €
ACA6-20-1000	6	16 ^{+0,08} / _{-0,08}	20 ^{-0,07} / _{-0,25}	4,0 ^{+0,08} / _{-0,08}	1000	1,911	✓	37,05 €
ACA6-22-1000	6	18 ^{+0,08} / _{-0,08}	22 ⁺⁰ / _{-0,10}	5,0 ^{+0,08} / _{-0,08}	1000	2,453	✓	41,99 €
ACA6-25-1000	6	21 ^{+0,08} / _{-0,08}	25 ^{-0,07} / _{-0,27}	5,0 ^{+0,08} / _{-0,08}	1000	3,139	✓	48,01 €
ACA6-28-1000	6	23 ^{+0,08} / _{-0,08}	28 ^{-0,07} / _{-0,25}	6,0 ^{+0,08} / _{-0,08}	1000	3,964	✓	64,54 €
ACA6-32-1000	6	26 ^{+0,08} / _{-0,08}	32 ^{-0,07} / _{-0,27}	6,0 ^{+0,08} / _{-0,08}	1000	5,008	✓	79,05 €
ACA6-34-1000	6	28 ^{+0,08} / _{-0,08}	34 ^{-0,07} / _{-0,27}	7,0 ^{+0,08} / _{-0,08}	1000	5,816	✓	93,28 €
ACA8-38-1000	8	32 ^{+0,08} / _{-0,08}	38 ^{-0,07} / _{-0,27}	6,0 ^{+0,08} / _{-0,08}	1000	7,433	✓	115,68 €
ACA8-42-1000	8	36 ^{+0,08} / _{-0,08}	42 ^{-0,07} / _{-0,27}	7,0 ^{+0,08} / _{-0,08}	1000	9,302	✓	150,14 €
ACA8-48-1000	8	42 ^{+0,08} / _{-0,08}	48 ^{-0,07} / _{-0,27}	8,0 ^{+0,08} / _{-0,08}	1000	12,371	✓	190,46 €
ACA8-54-1000	8	46 ^{+0,08} / _{-0,08}	54 ^{-0,07} / _{-0,27}	9,0 ^{+0,08} / _{-0,08}	1000	15,300	✓	277,15 €

*Depending on availability - Dimensions in mm

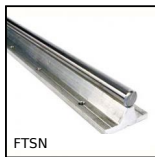
Our other products



RPPM
RPP type belt per
metre, RPP5 Steel
cored polyurethane



GPB55
Threaded spherical
knob, Aluminium



FTSN
Supported shaft for
linear guide, Steel
shaft / Aluminium
support



T5-BAR
T type tooth bar
stock, T5



CLQ
12.7mm wide steel
feeler strip on rolls,
Feeler strip on rolls



CHT
Asynchronous AC
motor 0.12 to 0.22kW,
0.12 to 0.22kW



BAG
Steel Clamping collar,
Steel



SUP
Self-centering
clamping hub steel,
Without locknut



MBF
Threaded blocking
clamp, Threaded
locking clamp



SLS
Bearing block for
leadscrew, Floating
Drylin® bearing block



RAG-12-M8
Roller guide
accessory, Anchoring
system



F7-SF-SM
Multifunction display,
Right angled
mounting bracket

Complementary products



BCA
Steel splined collar,
Steel



ACAss
Stainless steel splined
shaft, Stainless steel