

Hook for latch

Stock **Sta** **Ste**

ACZB
ACss

15mm wide versions

- Hook fastening
- Material: White zinc steel or stainless steel 303

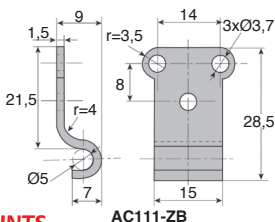
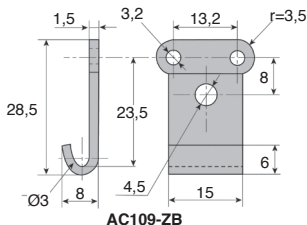
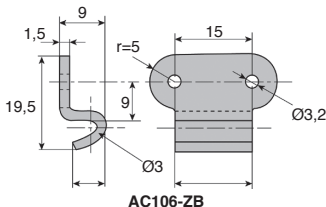
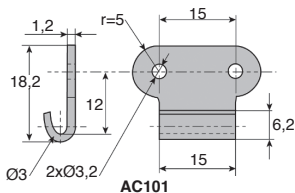
Selection

- Choose your own hook/latch combination by simply verifying the interior width of the ring and selecting a hook with a smaller width

Info.

- Not sold individually, please contact us for details

steel or stainless steel



DISCOUNTS

Qty	1+	51+	101+	250+	400+	500+
Disc.	List	-10%	-15%	-20%	-25%	On request

Part number	Suitable for latch	Weight (g)	Stock*	Price each 1 to 50
Steel				
AC101-ZB	GE14-ZB	4,7	✓	0,59 €
AC106-ZB	GE14-ZB	5,2	✓	0,95 €
AC109-ZB	GE14-ZB	6,2	✓	0,82 €
AC111-ZB	GE14-ZB	6,8	✓	1,28 €
Stainless steel				
AC101-SS	GE1006-SS	4,7	✓	0,59 €

*Subject to availability - Dimensions in mm

Widths: 12, 13, 18 and 20mm

ACZB
ACSS

- Hook fastening
- Material: White zinc steel or stainless steel 303

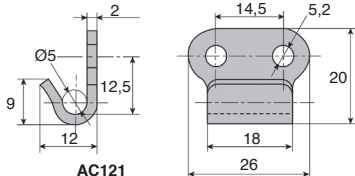
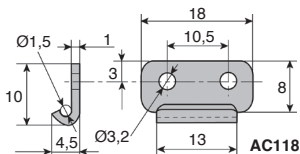
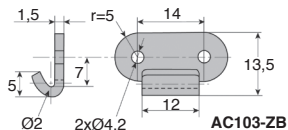
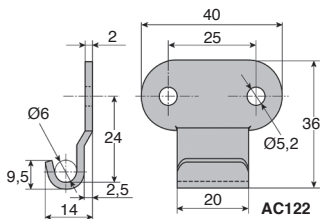
Selection

- Choose your own hook/latch combination by simply verifying the interior width of the ring and selecting a hook with a smaller width

Info.

- Not sold individually, please contact us for details

steel or stainless steel



DISCOUNTS

Qty	1+	51+	101+	250+	400+	500+
Disc.	List	-10%	-15%	-20%	-25%	On request

Part number	Suitable for latch	Weight (g)	Stock*	Price each 1 to 50
Steel				
AC103-ZB	-	3,4	-	0,27 €
AC118-ZB	GE18-ZB	1,5	✓	0,20 €
AC121-ZB	GE5-ZB	9,4	✓	0,44 €
AC122-ZB	GP22-ZB and GP23-ZB	1,9	✓	0,82 €
Stainless steel				
AC118-SS	GE18-SS	1,5	✓	0,37 €
AC121-SS	GE5-SS	9,4	✓	1,18 €
AC122-SS	GP22-SS and GP23-SS	1,9	✓	2,29 €

*Subject to availability - Dimensions in mm

Our other products



VP55
Small 6 lobe threaded handle - male, Duroplast - Stainless steel



T5_11
T type timing pulley, T5 aluminium



P70
Worm and wheel gear reducer, up to 164 Nm



E40
Right angle helical reducers, from 2.30 to 20 Nm



ZHG5
Plastic spur gear, Machined plastic (delrin)



RUR
Wheel, Polyurethane - Aluminium rim (Free running)



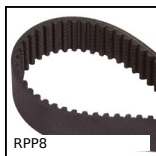
BZY_SS
Stainless steel cylindrical elastomeric mount, Stainless steel



TB8
Cylindrical roller thrust bearing, Steel



BOX-TOR-G
Box set of Nitrile O-rings in nitrile, 3.00 x



RPP8
RPP heavy duty timing belt, RPP8



EP7
Electronic digital position indicator, 5



PR40
Articulated foot Ø40, Ø 40

Complementary products



GE14
Toggle latches, With padlock-holder



AC144
Strike for toggle latch, 22mm



AC156-157
Strike for toggle latch, 25.5mm



AC156-157
Strike for toggle latch, 25.5mm