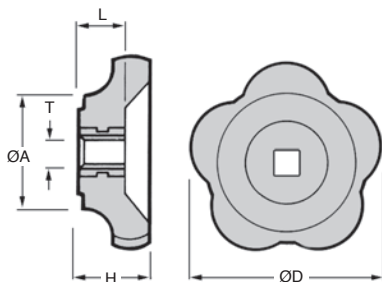
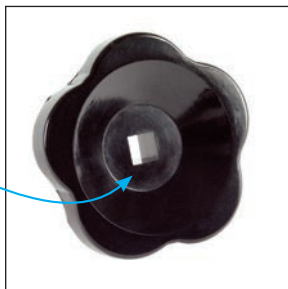




- **Operating elements**
- Working temperature: -30°C to +140°C
- Material: black phenolic plastic

Square bore



DISCOUNTS

Qty	1+	10+	20+	50+	100+
Disc.	List	-20%	-30%	-40%	On request

Part number	ØD	H	L	ØA	T	Stock*	Price each 1 to 9
712-051	50	18	12	22	6,5 x 6,5	✓	3,75 €
712-052	63	20	12	22	8 x 8	✓	5,12 €

*Depending on availability - Dimensions in mm

Our other products



BZY
Anti vibration mount,
Steel



RPCplss
Wheel pivoting with
plate, Stainless steel -
Polyamide



ZA
Linear shaft,
Hardened ground
steel



SH2
Parallel axis helical
gear, Machined plastic
(delrin)



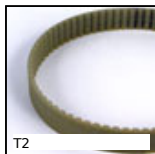
SLBWSS
Indexing plunger,
Weldable - Stainless
steel



PRF4545
Standard aluminium
profile, 45 x 45 mm



PRF4545_P
Strippable aluminium
profile, 45 x 45 mm



T2
Closed belt, T2.5 Steel
cored polyurethane



PGNT
Thermoplastic T
handle, With threaded
insert



ACLLPP
Closing system,
Spring operated latch



DOMI30
DOMILINE -
Accessories, XY
linking kit



SRG
Adjustable latch
clamp with catch-
plate, Stroke from
77,3mm to 83mm

Complementary products



SK
Knob for clamping,
Star, rounded



SK
Knob for clamping,
Star, rounded