

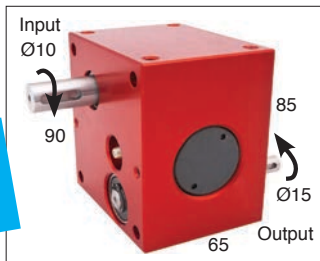
Double reduction worm gear reducers

PP50

Torque up to 12.8Nm

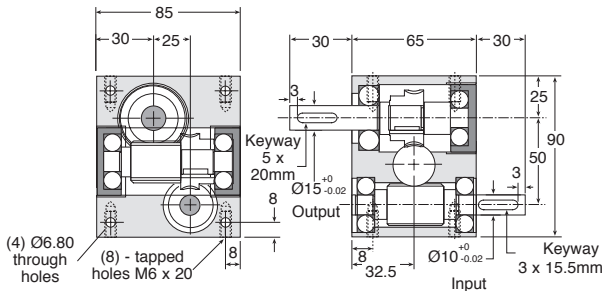
- Ratios from 25:1 to 900:1
- 2-stage reduction
- Output backlash $\approx 2^\circ$
- Max. input speed: 3000 rpm
- Materials:
 - casing: anodised aluminium
 - input: high carbon steel
 - output: bronze
- Weight: 1.80 kg

Very high reduction ratios



Options

- Can be modified to your specifications



OUTPUT TORQUE (Nm values given as a guide only)

Ratios	100:1	200:1	400:1
3000	6,50	7,10	8,20
2000	7,20	7,80	8,90
1000	8,20	9,00	9,80
INPUT SPEED (rpm)	500	9,50	10,20
200	11,00	11,60	12,20
100	12,00	12,30	12,60
50	12,70	12,80	12,80

DISCOUNTS

Qty	1+	2+	4+
Disc.	List -5%	On request	On request

Part number	Ratio	Max. input speed (rpm)	Max. output speed (rpm)	Efficiency at 1000 rpm	Anti back drive	Price each 1 to 5
PP50-100	100:1	3000	30,00	54%	NO	581,74 €
PP50-200	200:1	3000	15,00	48%	NO	581,74 €
PP50-400	400:1	3000	7,50	36%	YES	581,74 €
PP50-SP	25:1 - 900:1	Special ratios from 25:1 to 900:1				On request

Dimensions in mm