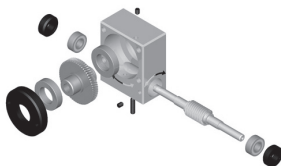
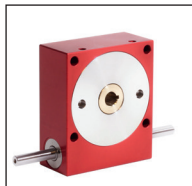


# Worm and wheel gearboxes

P, P-A  
P-AR

Technical information

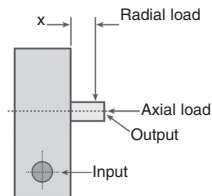
- Ratios: From 5:1 to 120:1
- Materials :
  - Housing - anodised aluminium
  - Worm - Steel
  - Wheel - Aluminium bronze
  - Stainless steel cap
- Max input speed: 3,000 rpm
- Backlash(output):  $\leq 0^{\circ}30'$  (P),  $\leq 0^{\circ}08'$  (P-A),  
 $\leq 0^{\circ}04'$  (P-AR)
- Lubrication: greased for life  
(Shell Gadus S5 V42P 2.5 grease)
- Guarantee: 13 months



Standard P  
P-A and P-AR range

## ADMISSIBLE LOADS

Part number	Distance 'X' (mm)	Input radial load (N)	Output Radial load (N)	Axial load (N)
P15	10	10	80	30
P20	10	20	120	50
P30	12	30	200	120
P40	15	50	300	200
P45	20	60	450	300
P55	20	140	600	400
P60	25	160	700	500
P70	30	200	800	600



Data given based on input speed of 1,000 rpm.  
values given as an indication only.