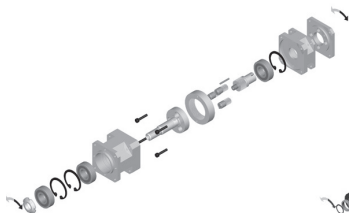
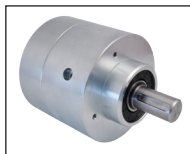
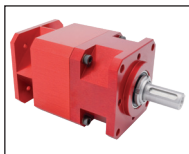


# Inline spur gearboxes

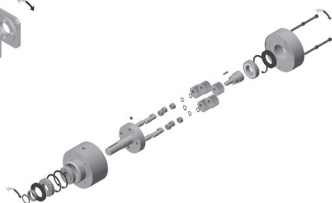
## Technical information

## EHD

- **Speed ratio: from 3:1 to 36:1**
- **Materials :**  
housing anodised aluminium  
gears in case hardened steel
- **Max. speed: 2,000 to 4,000 rpm** on  
input depending on model
- **Backlash:  $\leq 15'$  ( $0,25^\circ$ )** on output
- **Lubrication: greased for life**  
(Shell Gadus S5V42P 2,5 grease)
- **Guarantee: 13 months**
- **Tolerances :**  
• Ground shafts h7, Ra 0.8



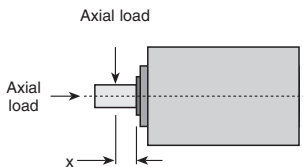
EHD 04, 06, 08, 12 range



EHD16 range

### ADMISSIBLE LOADS

Part number	Distance 'X' (mm)	Output	
		Radial load (N)	Axial load (N)
EHD04	10	200	150
EHD06	10	250	150
EHD08	12	300	200
EHD12	20	600	600
EHD16	30	1000	1000



Data given based on input speed of 1,000 rpm.  
Values given as an indication only.