

MADE TO MEASURE

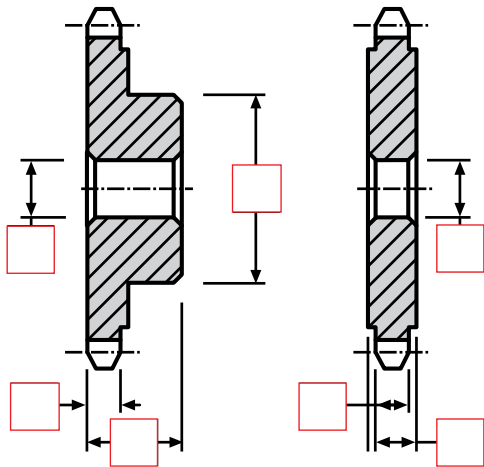
CHAIN SPROCKETS PLEASE FILL IN THE DETAILS

Please complete this form and return it to us!

Email address: cial2@hpceurope.com

Tel: +33(0)4 37 496 496

Fax: +33(0)4 37 490 055



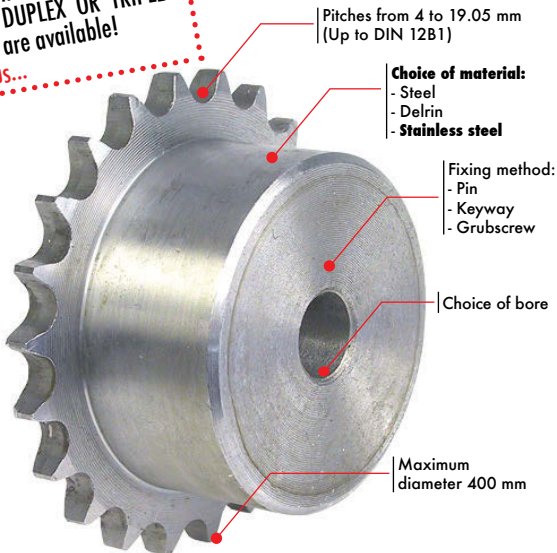
SPROCKET CHARACTERISTICS			
Pitch		Keyway	
N° of teeth		Tapped hole	
Ø PCD		Material	
Ø external		Treatment	
Quantity		Other:	

MADE TO MEASURE

CHAIN SPROCKETS

1. **SMALL CHANGES:** Find the Part N° of the standard part (from the catalogue or website) and specify the modification(s) required (bore, keyway....)
2. **CHANGES TO DIMENSIONS:** Please complete the form opposite
3. **CUSTOM MADE PART:** Please send us your drawing(s)

Made to measure versions of
SIMPLEX, DUPLEX OR TRIPLEX
sprockets are available!
Contact us...



DID YOU KNOW?

A system built using sprockets and chains must be kept under tension and correctly lubricated. Please do not forget to include a chain tensioner in your system.

Contact our technical support team for more information