

# Multi-sector enclosure/door handle

## PO

## Back to back mounting

- Ideal for back mounting, i.e. a PO handle used on one side with a PO-M handle on the other (see typical application)

- Colour: matt black

- Materials:

Handle: Fibreglass reinforced Technopolymer

Insert: Brass (PO-M version)

- PO version has a smooth bored hole for socket head screw

- PO-M has a blind threaded insert



PO version



PO-M version



Black



Red: safety

Add: /R  
to end of part N°



Orange:

furniture, kitchens

Add: /O  
to end of part N°



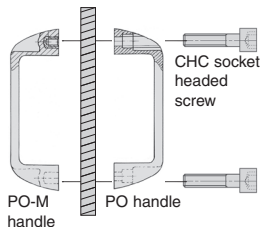
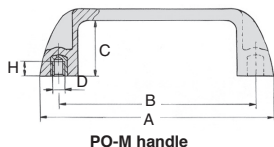
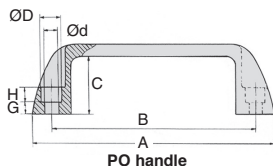
Grey: food industry

Add: /G  
to end of part N°



White: medical

Add: /W  
to end of part N°



Back to back mounting

## DISCOUNTS

Qty	1+	6+	20+	50+	100+	250+
Disc.	List	-5%	-10%	-15%	-20%	On request

Part number	B	A	E	F	C	G	H	ØD	Ød	Stock*	Price each 1 to 5
<b>With smooth hole</b>											
PO93-6	93,5	112	21	36	30	6	7	10,5	6,5	✓	3,69 €
PO117-6	117	139	26	41	34	6	9	10,5	6,5	✓	4,01 €
PO117-8	117	139	26	41	34	6	9	13,0	8,5	✓	4,01 €
PO132-6	132	156	27	45	37	9	7	10,5	6,5	✓	5,47 €
PO132-8	132	156	27	45	37	7	9	13,0	8,5	✓	8,02 €
PO179-8	179	204	28	50	42	8	9	13,0	8,5	✓	8,02 €
<b>With threaded hole</b>											
PO93-M5	93,5	112	21	36	30	-	9	M5	-		5,35 €
PO93-M6	93,5	112	21	36	30	-	9	M6	-	✓	5,63 €
PO117-M6	117	139	26	41	34	-	9	M6	-	✓	5,93 €
PO117-M8	117	139	26	41	34	-	9	M8	-	✓	5,93 €
PO132-M6	132	156	27	45	37	-	9	M6	-	✓	6,61 €
PO132-M8	132	156	27	45	37	-	9	M8	-	✓	6,61 €
PO179-M8	179	204	28	50	42	-	9	M8	-	✓	9,57 €

\*Depending on availability - Dimensions in mm