

# 180° ball and socket joint steel or stainless steel

## IBJ Steel/steel or stainless steel/stainless steel contact

### IBJss

- **Inline ball and socket joint similar to DIN 71802**

- Body to DIN 71805

- Stem to DIN 71803

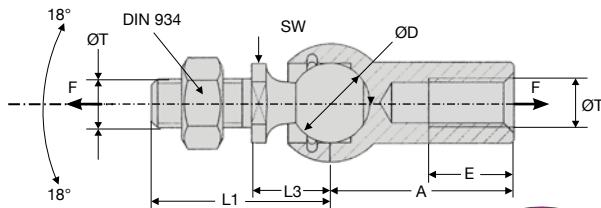
- Materials:

Zync plated steel

Stainless steel 1.4305 (A2 stainless steel)



Steel or stainless steel



NEW DISCOUNTS

### DISCOUNTS A / steel

Qty	1+	6+	20+	40+	60+
Disc.	Price	-20%	-30%	-50%	On request

### DISCOUNTS B / stainless steel

Qty	1+	6+	20+	40+	60+
Disc.	Price	-15%	-20%	-30%	On request

Part number	ØD	ØT	A	L1	L3	E	SW	Axial load F (N)	Weight (kg)	Stock*	Price each 1 to 5
<b>Steel</b>											
IBJ-5	8	M5	22	19,2	9	10,2	7	30	0,015	✓	A 5,35 €
IBJ-6	10	M6	25	23,5	11	11,5	8	40	0,025	✓	A 6,86 €
IBJ-8	13	M8	30	29,5	13	14,0	11	60	0,053	✓	A 7,25 €
IBJ-10	16	M10	35	36,0	16	15,5	13	80	0,104	✓	A 10,05 €
IBJ-14x1.5	19	M14x1,5	45	48,0	20	21,5	16	100	0,221	✓	A 25,66 €
<b>Stainless Steel</b>											
IBJ-5/SS	8	M5	22	19,2	9	10,2	7	30	0,015	✓	B 9,64 €
IBJ-6/SS	10	M6	25	23,5	11	11,5	8	40	0,025	✓	B 11,55 €
IBJ-8/SS	13	M8	30	29,5	13	14,0	11	60	0,055	✓	B 12,68 €
IBJ-10/SS	16	M10	35	36,0	16	15,5	13	80	0,105	-	B 20,76 €

\*Depending on availability - Dimensions in mm