

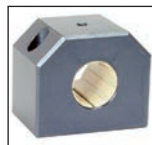
RJUM05 RJUM06

Unaffected by dirt

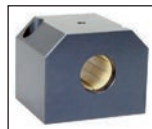
- Housing for closed bearing
- Two versions available: short (RJUM05) or long (RJUM06)
- Interchangeable with standard bearing housings
- Easy to use
- Recommended tolerance: h7
- Material:

Housing: Aluminium
Liner: iglidur® J

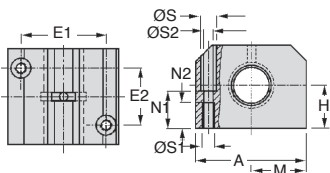
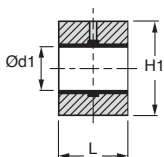
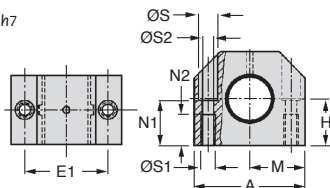
Fast and silent



RJUM05



RJUM06



Until
-35%^{}**

DISCOUNTS

Qty	1+	6+	20+	40+	60+
Disc.	List	-10%	-15%	-20%	On request

Part number	Ød1	Tolerance	H	H1	A	M	E1	E2	ØS	ØS1	ØS2	N1	N2	L	Price
															each
Short version															1 to 5
RJUM05-12	12	0,02 / 0,05	17	33	40	20,0	29	-	8	M5	4,3	16	11	28	57,00 €
RJUM05-16	16	0,02 / 0,05	19	38	45	22,5	34	-	18	M5	4,3	18	11	30	57,16 €
RJUM05-20	20	0,02 / 0,06	23	45	53	26,5	40	-	19,5	M6	5,3	22	13	30	64,15 €
RJUM05-25	25	0,02 / 0,06	27	54	62	31,0	48	-	11	M8	6,6	26	18	40	66,96 €
RJUM05-30	30	0,03 / 0,07	30	60	67	33,5	53	-	11	M8	6,6	29	18	50	76,48 €
RJUM05-40	40	0,03 / 0,07	39	76	87	43,5	69	-	14	M10	8,4	38	22	60	99,85 €
RJUM05-50	50	0,04 / 0,09	47	92	103	51,5	82	-	19	M12	10,5	46	26	70	135,54 €
Long version															
RJUM06-12	12	0,02 / 0,05	18	35	43	21,5	32	23	8	M5	4,3	16,5	11	39	67,94 €
RJUM06-16	16	0,02 / 0,05	22	42	53	26,5	40	26	10	M6	5,3	21	13	43	75,54 €
RJUM06-20	20	0,02 / 0,06	25	50	60	30,0	45	32	11	M8	6,6	24	18	54	81,36 €
RJUM06-25	25	0,02 / 0,06	30	60	78	39,0	60	40	15	M10	8,4	29	22	67	91,08 €
RJUM06-30	30	0,03 / 0,07	35	70	87	43,5	68	45	15	M10	8,4	34	22	79	99,43 €
RJUM06-40	40	0,03 / 0,07	45	90	108	54,0	86	58	18	M12	10,5	44	26	91	115,81 €
RJUM06-50	50	0,04 / 0,09	50	105	132	66,0	108	50	20	M16	13,5	49	34	113	223,97 €

Dimensions in mm